

PROPERTY OF  
Z. P. METCAL

A N  
E P I T O M E  
O F T H E  
N A T U R A L H I S T O R Y  
O F T H E  
I N S E C T S O F I N D I A,  
A N D T H E  
I S L A N D S I N T H E I N D I A N S E A S :

C O M P R I S I N G  
U P W A R D S O F T W O H U N D R E D A N D F I F T Y  
*F I G U R E S A N D D E S C R I P T I O N S*

O F  
T H E M O S T S I N G U L A R A N D B E A U T I F U L S P E C I E S , S E L E C T E D C H I E F L Y F R O M T H O S E  
R E C E N T L Y D I S C O V E R E D , A N D W H I C H H A V E N O T A P P E A R E D I N  
T H E W O R K S O F A N Y P R E C E D I N G A U T H O R .

T H E F I G U R E S  
A R E A C C U R A T E L Y D R A W N , E N G R A V E D , A N D C O L O U R E D , F R O M S P E C I M E N S O F T H E I N S E C T S ;

T H E D E S C R I P T I O N S  
A R E A R R A N G E D A C C O R D I N G T O T H E S Y S T E M O F L I N N Æ U S ; W I T H R E F E R E N C E S T O T H E  
W R I T I N G S O F F A B R I C I U S , A N D O T H E R S Y S T E M A T I C A U T H O R S .

---

*By E. DONOVAN,*

AUTHOR OF THE NATURAL HISTORY OF THE INSECTS OF CHINA, &c.

---

L O N D O N :  
*P R I N T E D F O R T H E A U T H O R ,*  
B Y T . B E N S L E Y , B O L T C O U R T , F L E E T S T R E E T ;  
A N D S O L D B Y M E S S R S . R I V I N G T O N S , S T . P A U L ' S C H U R C H Y A R D ; W H I T E , F L E E T S T R E E T  
F A U L D E R , B O N D S T R E E T ; A N D H . D . S Y M O N D S , F A T E R N O S T E R B O W .

---

1800.



## ADVERTISEMENT.

ABOUT four years since, the Author published an Epitome of the Insects of China, precisely in the same form, and nearly on the same plan, as those of India, which are now submitted to the public. Of the encouragement he experienced on that occasion it might be highly improper to speak with confidence at this moment, lest the sincerity of his motives should be misconceived. Whether he is entitled to expect the like degree of countenance as before, must rest alone with the candid reader to decide. For his own part he will be content to say, that the favourable reception which the Epitome of the Insects of China met with, was an irresistible inducement with the Author to undertake a similar illustration of the Insects of India; and that whatever may have been ultimately his success, he has not been less solicitous to render it, in every respect, as interesting and complete as the former work.

Various arguments might be adduced in behalf of the present publication, to one of which we cannot refrain adverting. It becomes our peculiar province at this time to awaken the public curiosity to a subject of no mean importance: we are about to consider with attention, the entomological productions of a country for which we ought to cherish the liveliest and deepest interest, as being connected intimately with the prosperity, the dignity, and honour of the British empire;—in a word, of British India, that invaluable portion of territorial domains so long retained in our possession, and finally confirmed to us by the brilliant career of glory that has so recently crowned the exertions of British valour in the eastern world. Not that the Author can be disposed to attach any greater degree of consequence to the subject of Indian Entomology in particular, than it may really merit, from the contemplation of events of such vast political magnitude as those alluded to: he is only inclined to entertain the opinion, that a work professedly treating upon the Natural History of a country, in which, as a nation, we have such an immediate interest, will not be thought destitute of some legitimate claim to public protection. Further still; he must believe that a work which, from the extent of its design and style of embellishments, is calculated to display the Entomology of India to advantage, will not prove unacceptable; and as no attempt has been hitherto made to elucidate this beautiful tribe of creatures in a similar manner, that the present work may become hereafter of some utility at least, to many individuals who reside in India, as well as to the naturalist in this country.

That the Epitome of Indian Insects is not entirely confined to those found in such parts of India as are in the British possession should be clearly stated, since it embraces, on the contrary, the most choice selection possible of those which inhabit every other part of that vast continent, and also the islands situated in the Indian seas. The far greater number of insects included in this selection, are described and figured from specimens in the cabinet of the Author, that were originally collected by the late Duchess of Portland, Mr. Tunstal, Governor Holford, many years resident in India, Mr. Ellis, Mr. Keate, Mr. Yeats, and Mr. Bailey.

The author has to acknowledge, likewise, the advantages derived occasionally from inspecting the noble collections of Mr. Francillon, Mr. Drury, and some others spoken of in the course of this work, among which he ought to mention that of A. M<sup>c</sup>Leay, Esq. especially as being one from which he has received very material assistance. And lastly, the Author cannot permit the opportunity to escape him which the present instance affords, to repeat his thanks to that munificent patron of the sciences, the Right Hon. Sir J. Banks, Bart. K.B. for the unreserved access to his classic cabinet and library, with which he has been at all times indulged, in order to complete his General Illustration of Entomology, of which the Epitome of Indian Insects constitutes the second Volume.



COLEOPTERA



*Lucanus - Illus.*

# COLEOPTERA.

## SCARABÆUS ATLAS.

### GENERIC CHARACTER.

Antennæ clavated; club divided into plates. Palpi four. Jaws horny, somewhat toothlefs. Shanks of the anterior legs generally dentated.

### SPECIFIC CHARACTER.

Thorax three horned, the fore one very fhort; on the head a fingle afcending horn.

SCARABÆUS ATLAS: thorace tricorni: anteriore breviffimo; capitis cornu adfcendente. *Linn. Syst. Nat.—Mus. Lud. Ur. 6.*

---

We are in poffeffion of a fine fpecimen of this gigantic infect, the only one perhaps of the kind at prefent in this country. It was purchafed by the late Mr Tunftal from the cabinet of a Dutch governor in the Eaft Indies, with various other uncommon infects that appear in the courfe of the prefent work. There is every reafon to believe that it inhabits the ifland of Amboyna; or at leaft that our fpecimen was met with in that fpot.

Scarabæus Atlas is one of the Linnæan fpecies, being defcribed by that great naturalift from an infect in the mufeum of the Queen of Sweden. The fame is likewife figured and defcribed by other continental writers, among whom we may mention Merian, Swammerdam, and Voet. Edwards likewife, in his *History of Birds*, Pl. 105, gives a figure of this and another large kind of Scarabæus \*, both of which he tells us had been brought from Borneo, in the Eaft Indies, a circumftance that ought to be obferved, fince other writers fpeak of this infect as a native of South America.

---

## SCARABÆUS SPINIFEX.

### SPECIFIC CHARACTER.

Without fcutel, thorax roundifh, unarmed: a recurved fpine on the back of the head.

SCARABÆUS SPINIFEX: exfcutellatus, thorace rotundato inermi, occipite fpina recurva. *Fab. Spec. Inf. 1. p. 29. Sp. 131.*

---

Inhabits the coaft of Coromandel according to Fabricius, who refers to the colleâtion of Sir J. Banks Bart. for this infect. The fame fpecies has alfo been received by us from Bengal.

\* Scarabæus Bilobus. Edwards erroneoufly imagined this to be the female, and S. Atlas the male of the fame fpecies.

## COLEOPTERA.

---

### SCARABÆUS MILIARIS.

#### SPECIFIC CHARACTER.

Without scutellum; head and thorax unarmed: shield of the head six-toothed: thorax and wing cases dark, with elevated black spots.

SCARABÆUS MILIARIS: exscutellatus muticus, clypeo sex dentato, thorace elytrisque nigris, maculis elevatis atris. *Fab. Spec. Ins.* 1. p. 32. *Sp.* 141.

---

---

This and the following species seem at first sight to resemble each other, but are nevertheless distinct: the two kinds are represented in the same plate, both of the natural size and magnified, in order that the exact difference between them may be the more easily discriminated.

---

---

### SCARABÆUS KÆNIGII.

#### SPECIFIC CHARACTER.

Without scutellum, unarmed, black; shield of the head bidentate: thorax scabrous: wing-cases dotted with cinereous.

SCARABÆUS KÆNIGII: exscutellatus muticus, niger, clypeo bidentato, thorace scabro, elytris punctis cinereis. *Oliv. Hist. Ins.* 163.

---

---

### CETONIA HISTRIO.

#### SPECIFIC CHARACTER.

Testaceous: two lines on the thorax: future and three spots on the outer margin black.

CETONIA HISTRIO: testacea, thoracis lineis duabus elytrorum futura maculisque tribus nigris.

CETONIA HISTRIO. *Fab. Syst. Ent.—Oliv. Hist. Ins.* pl. 10. fig. 94.

---

---

### CETONIA CÆRULEA.

#### SPECIFIC CHARACTER.

Blue; thorax lobed, immaculate: wing-cases dotted with white.

CETONIA CÆRULEA: cærulea, thorace lobato immaculata elytris albo punctatis. *Oliv. Hist. Ins.* *Cet.* p. 47. pl. 5. fig. 31.

---

---

Figured by Olivier from a specimen in the cabinet of the unfortunate Louis the Sixteenth, King of France. Our specimens are from Bengal.



COLEOPTERA.



\* *Scarabaeus spingeri.*

\* *Cetonia Austria.*

\* *Miliaris Hoeniggi.* \*

*Cetonia caerulea* \*





COLEOPTERA.



\* *Buprestis sternicornis*.      *Buprestis chrysis*. \*

\* \* *Aeneas maculata* \* \*

## COLEOPTERA.

---

### BUPRESTIS STERNICORNIS.

#### GENERIC CHARACTER.

Antennæ fetaceous, as long as the thorax. Head half retracted, or drawn back within the thorax.

#### SPECIFIC CHARACTER.

Entirely shining green, with grey impressed spots. Wing cases serrated and terminated in three teeth. A conic projecting horn on the breast.

BUPRESTIS STERNICORNIS: clytratis ferrate tridentatis: punctis cinereis impressis, sterno porrecto conico.

*Linn. Syst. Nat.* 2. 660. 5.

*Muf. Lud. Utr.* 88.

*Fab. Ent. Syst. T. 3. p. 1. p. 194. Sp. 35.*

---

Among the Insects of China, we have already described a very beautiful species of the Buprestis genus, which the natives of that country collect in considerable numbers, and employ in the various ornaments of their dresses, arms, &c. The Buprestis Sternicornis, and Chrysis, are collected in India for similar purposes, but being scarce, are esteemed more valuable than the other kind, which they receive at a low price from China.

Both species are brought from Madras and Bombay, but generally in a mutilated state; for the Indians perforate them at both ends and string them like beads, when they collect them.

---

### BUPRESTIS CHRYSIS.

#### SPECIFIC CHARACTER.

Thorax green, wing-cases chestnut colour, and terminated in three teeth. A conic projecting horn on the breast.

BUPRESTIS CHRYSIS: clytris ferrato tridentatis castaneis, sterno conico porrecto.

*Fab. Ent. Syst. T. 3. p. 1. p. 194. Sp. 36.*

# COLEOPTERA.

---

## BUPRESTIS ÆNEA.

### SPECIFIC CHARACTER.

Shining, bronze, wing-veins terminated in three teeth.

BUPRESTIS ÆNEA: elytris tridentatis corpore æneo immaculato.

*Fab. Ent. Syll. T. 3. p. 1. p. 193. Sp. 31.*

---

From the coast of Coromandel.—Cabinet of the Right Hon. Sir J. Banks, Bart.

---

## BUPRESTIS 4-MACULATA.

### SPECIFIC CHARACTER.

Green, two golden spots on the thorax, and two on each wing vein.

BUPRESTIS 4-MACULATA: elytris integris viridis thorace postice elytrisque maculis duabus aureis.

*Fab. Ent. Syll. T. 3. p. 1. p. 209. 96.*

---

Described by Fabricius from the collection of the late Dr. Fothergill, as an Indian species. It is a minute creature, but admirably beautiful.



COLEOPTERA.



\* *Carabus 6 maculatus.*      *Carabus 2, maculatus.* \* \*



COLEOPTERA.

---

CARABUS 6-MACULATUS.

GENERIC CHARACTER.

Antennæ filiform. Palpi six, exterior joint obtuse, and truncated. Thorax heart-shaped, truncated at the tip behind, and margined. Wing-veins margined.

SPECIFIC CHARACTER.

Apterous, black: on the thorax two white downy spots; shells with four.

CARABUS 6-MACULATUS: apterus ater, thorace maculis duabus, elytris quatuor tomentoso albis.

CARABUS SEX-GUTTATUS. *Gmel. Syst. Nat.* 1965. 63.—*Thunb. nov. Ins. Sp.* 4. p. 70. f. 84.—  
UNFIGURED.

---

One of the largest species of the Carabus genus known. Our specimen is from the cabinet of the late Duchefs of Portland.

COLEOPTERA.

---

CARABUS BIMACULATUS.

SPECIFIC CHARACTER.

Black, with a common interrupted yellow stripe: antennæ and legs testaceous.

CARABUS BIMACULATUS: niger, fascia communi flava interrupta, antennis pedibusque testaceis.  
*Gmel. Syst. Nat. 1971. Sp. 107.*

---

This neat little insect we have seen from several parts of the East Indies.



COLEOPTERA.



*Paupus denticornis.*      *Paupus thoracicus.*  
*Fichtelii pulicornis.*

# COLEOPTERA.

## PAUSUS DENTICORNIS.

### GENERIC CHARACTER.

Antennæ consisting of two joints, the exterior one clavated and furnished with a hook, or spinous process.

### SPECIFIC CHARACTER.

Brown: wing-cases fuscous on the back, with a brown posterior spot on each: club of the antennæ foliaceous, with a single tooth.

PAUSUS DENTICORNIS: brunneus elytris dorso fuscis: macula postice brunnea, antennarum clava foliacea unidentata.

---

The first account of the Pausus genus appears in a small tract written by Linnæus, and published at Upsal, in the year 1775, under the title of *Bigas Insectorum*, &c. This paper contains likewise a description of the Diopis genus, which, together with the Pausus, are unquestionably two of the most singular genera of the many tribes of insects hitherto discovered. Both may possibly derive some additional celebrity also from the recollection that the dissertation in which they are inserted concluded the Entomological labours of that distinguished naturalist: it was the last he ever published in the department of zoology.

In the dissertation alluded to, the Pausus genus is exemplified by the species *Microcephalus*, Diopis by *Ichneumonea*, a plate with figures of both which, drawn by J. Afzelius, and engraved by Berquist, accompany the descriptions. It is to this plate, and the original descriptions of Linnæus, that Fuefly is indebted solely for the account he gives of both these genera in his *Archiv. der Insectengeschichte*, printed at Zurich in 1783. The figures are precisely copies of those engraved by Berquist, as are likewise those contained in the French translation of that work which afterwards appeared in Paris. Indeed, as Professor Afzelius has suggested, from the repeated errors that appear in those works in translating the Linnæan observations, defining the character of the Pausus genus, &c. it is very likely that neither Fuefly, nor his translators, Herbit, Gmelin, and some other writers who have treated on it, ever saw an insect of the Pausus genus; the same might be truly said of the Diopis genus also.

Thunberg during his travels through the country of the Hottentots in 1772, found two coleopterous insects which he conceived with much propriety ought to be referred to a new genus, neither of those established previous to his departure from Europe by Linnæus being calculated to admit them. But on his return to Sweden, he found that Linnæus in his absence had described that of Pausus, or as he called it Pausfus, to which they might be referred. An account of these was afterwards inserted in the Transactions of the Royal Academy of Stockholm for 1781: this paper is accompanied with a figure of only one of the insects mentioned, *lineata*, a species very aptly named from the distinct longitudinal streak on each of the wing-cases, and which is clearly of the same natural family as the Linnæan Pausus *Microcephalus*; the other insect described by Thunberg he calls *ruber*.—Fabricius configns these, with the Linnæan insect, to his genus *Cerocoma*.

The latest history of the Pausus genus is from the pen of Professor Afzelius, a learned, copious, and elaborate paper, inserted in the fourth volume of the Transactions of the Linnæan Society. He describes Pausus *Microcephalus*, and also another kind which he found in Africa, and names *Spheroides*. We may justly regret, on the perusal of this excellent paper, that only two species of the Pausus were known to this writer.—Neither of those insects are allied to the four following species, which appear to be entirely undescribed. For this important accession of new species to a genus heretofore so little known, and, in consequence so imperfectly understood, we are indebted to the active and praise-worthy zeal of Mr. Fichtel, in compliment to whom one of them is named *Fichtelii*. They were all found in the vicinity of Bengal.

## COLEOPTERA.

*Paufus denticornis* is clearly of the same natural family as the rest, having the same kind of biarticulated antennæ: the club is even much larger in proportion than in the others, and the lateral pointed process more conspicuous; yet according to the character laid down by Afzelius, this should not be admitted into the *Paufus* genus, the number of joints in each of the *tarsi*, or feet, amounting only to three; and on the contrary in the three others they are five in number, notwithstanding that without very close inspection they appear to consist only of four. From this circumstance, we are of opinion, that the Linnæan character while it passes clear of the prolixity of that established by Afzelius, is perfectly sufficient, "Antennæ clavatis, biarticulatis, clava solida uncinata." Or with the omission of "clava solida" it might be still more applicable.

---

### PAUSUS THORACICUS.

#### SPECIFIC CHARACTER.

Testaceous: disk of the shells fuscous: thorax bipartite: club of the antennæ oblong, excavated behind, cavity oval, denticulated at the margin.

PAUSUS THORACICUS: testaceis, coleoptris disco fuscis, thorace bipartite clava oblonga pofice excavata: cavitate ovali marginibus denticulatis.

---

The thorax in this insect is so deeply divided across the middle that it appears, at the first sight, as if it were really two. Hence it is named *thoracicus*, but it must be observed, at the same time, that the following differs very little in this respect, the thorax being also very deeply divided. *P. thoracicus*, and *Fichtelii*, are pretty nearly alike in other respects, and may be of the same species, differing only in the sex; the most striking difference prevails in the structure of the antennæ, the excavation in one of which is of an oval, or rather shuttle shape, and in the other pyriform.

---

### PAUSUS FICHELII.

#### SPECIFIC CHARACTER.

Testaceous: wing-cases brown, testaceous at the anterior and posterior ends: thorax somewhat bipartite: club of the antennæ oblong, excavated behind, cavity pyriform.

PAUSUS FICHELII: testaceis elytris fuscis antice poficeque testaceis thorace sub-bipartito, clava oblonga pofice excavata: cavitate pyriformi.

---

### PAUSUS PILICORNIS.

#### SPECIFIC CHARACTER.

Testaceous: wing-cases pitchy: thorax bipartite, club oblong, attenuated, incurvated at the tip, and beset with a few long hairs.

PAUSUS PILICORNIS: testaceis elytris piccis, thorace bipartito clava oblonga apice attenuata incurva pilis longis sparsis.

---

In the formation of the club composing the second or exterior joint of the antennæ, this species differs altogether from the others: the club is entire or not excavated, and is slightly beset with hairs. Of this sort Mr. Fichtel met with only a solitary specimen, as was likewise the case with our *Pausus Fichtelii*.



COLEOPTERA.



*Curculio Regalis.*      *Curculio Palmorum.*



# COLEOPTERA.

---

## CURCULIO REGALIS.

### ROYAL CURCULIO.

#### GENERIC CHARACTER.

Antennæ club-shaped and inserted in a horny proboscis or snout.

#### SPECIFIC CHARACTER.

Rostrum short. Blue changeable to green, velvety or like silk, with bands of reddish gold.

CURCULIO REGALIS: brevisrostris corpore viridi fericeo: fasciis aureis repandis. *Linn. Syst. Nat.* 2. 616 75.  
*Fab. Ent. Syst. T.* 1. p. 2. p. 449. 234.

---

If our ideas of the term *regalis* will permit its application to any insect, we agree with Linnæus in the appropriate, though pompous title bestowed on this species of Curculio. It is an aggregate of beauty and splendour: of the loveliest cœrulean, changing alternately to the deeper glow of the violet, to green, or the transitory sparkling of intermingled silver. Every space of blue is constantly contrasted with another of crimson, and which as the violet changes to blue or green, alters its aspect to a still more vivid expanse of gold. Each of those colours, the blue and red, are distinct; for an irregular space of black limits every spot and marking, and relieves the whole. As the effect of such a combination of colours in this comparatively small species is inconceivably splendid, and almost inimitable, one figure in the plate is intended to show the natural size, and to admit of more perfect delineation, another somewhat magnified is added also.

This insect, which is believed to be *unique* in Great Britain, was brought from France in the collection of M<sup>ons.</sup> DE CALONNE, and is in the possession of the author. Linnæus met with it in one of the cabinets on the continent, and describes it as a South American insect. In the *Entomologia Systematica* the error is corrected, and it stands as an Indian species.

COLEOPTERA.

The *Curculio regalis* has been figured only in the unfinished productions of a French author on Exotic Coleoptera, Olivier, and the extreme scarcity of that part of his work which has been published, would induce us to add this insect to our Indian species, were we uninfluenced by any other motive.

---

CURCULIO PALMARUM.

PALM TREE CURCULIO.

SPECIFIC CHARACTER.

Rostrum long. Entirely black. Thorax broad and flattish. Wing cases short and striated.

CURCULIO PALMARUM: longirostris ater thorace supra plano, clytris abbreviatis striatis.

*Fab. Ent. Syst. T. 1. p. 2. p. 395. sp. 2.*

*Linn. Syst. Nat. 2. 506. 1.*

---

A very abundant species in India, where it is found chiefly on the palm trees.



HEMIPTERA.



*Fulgora pyrorhynchus*.

*Fulgora festiva*. *Fulgora hyalinata*.

HEMIPTERA.

✓<sup>o</sup> FULGORA PYRORHYNCHUS.

RED-TIPPED FIRE FLY.

GENERIC CHARACTER.

Forehead elongated. Antennæ below the eyes, and consist of two articulations. The beak or rostrum bent inwards under the body.

SPECIFIC CHARACTER.

Trunk ascending, apex red. Wing cases brown, pale across the middle. Wings black, green at the base.

FULGORA PYRORHYNCHUS: fronte rostrata ascendente apice rubra, clytris fuscis fascia pallidior: alis nigris basi viridibus.—UNFIGURED.

---

Amongst the more valuable acquisitions, designed to enrich this illustration, few can afford higher gratification to the scientific reader than this Fulgora. In size it is inferior only to <sup>✓</sup>F. Lanternaria, it is an undoubted nonfeript, and may be considered as a striking example of the entomological riches of a country hitherto scarcely known, the interior of *Indostan*. It was originally brought from India by the late Governor Holford, and is now in the possession of the author. He has sought in vain for this species in other cabinets of exotic insects, and ventures to deem his specimen *unique*.

In the course of our remarks on the Fulgora so abundant in China, <sup>✓</sup>F. Candelaria, our attention was naturally directed to the astonishing property some insects of this genus are known to possess, that of emanating light; and it was to this insect we alluded in particular, when speaking of one from interior India, that enabled us to extend our observations on that property. The trunk is large, of a dark purple, thickly sprinkled with spots of white phosphoric powder, and the apex, which is scarlet, and somewhat pellucid, still retains a reddish glow, that almost convinces us the creature when living could diffuse light both from the apex and the spots. In admitting this conjecture, without wandering into the marvellous, its nocturnal appearance must be infinitely more singular than either of the known species of Fulgora, Lampyrides, or any other luminous insect yet discovered; for, when on the wing, the illuminated apex would resemble a globe of fire, or heated iron, and the numberless phosphoric spots on the tube, form a train of glittering stars to accompany it\*.

\* As it may be thought improbable that any insect can exhibit such an extraordinary appearance, the words of Olivier on some species of Lampyrides may not be unsatisfactory. The insects are certainly very distinct, but reports of travellers countenance an opinion that the phosphoric emanations are analogous in the species of both genera. 'The phenomena produced by a natural phosphorus is still more wonderful in some foreign species, in which the males shine, and being provided with wings will produce in their rapid flight a thousand small stars.'—Olivier, *Histoire des Insectes*.

## HEMIPTERA.

The only figure of a Fulgora in any respect resembling this species, is given in the works of Stohl under the title of *De Grootte Goene Coromandelijche Lantaarndrager*\*; but among other evident specific distinctions we need only notice the structure of the trunk, which is altogether different, being much recurved and tapering gradually from the base to an acute point at the apex: its colour is also an olive black.

---

### ◦ FULGORA HYALINATA.

CLEAR-WINGED FIRE FLY.

#### SPECIFIC CHARACTER.

Trunk conic, uneven. Wing cases transparent, fireaked across with black.

FULGORA HYALINATA: fronte conica inæqualis elytris hyalinis: stigma atra. *Fab. Ent. Syst. T. 4. p. 5. sp. 16.*—UNFIGURED.

---

Fabricius refers to the collection of Sir Joseph Banks, Bart. for this and the following species. The annexed figures are copied from the specimens that author has described.—F. Hyalinata is from Bengal.

---

### √ C FULGORA FESTIVA.

HANDSOME FIRE FLY.

#### SPECIFIC CHARACTER.

Trunk conic. Wing cases brown: anterior margin green with five black spots, semi-circled with orange. Wings red at the base.

FULGORA FESTIVA: fronte conica, elytris fuscis: margine exteriori virescente; punctis nigris fulvisque, alis basi rubris. *Fab. Ent. Syst. T. 4. p. 5. sp. 17.*—UNFIGURED.

---

This species is from Coromandel.

\* Pl. 26, fig. 143. Green Lantern-carrier fly of Coromandel.—At the conclusion of the description Stohl says, “*In de Niderlandische Kabinetten, &c. &c.*” ‘This insect was not known in the cabinets of the low countries till within three years,’ anno 1780, ‘during which time a few were brought from Tranquebar on the Coromandel coast, to the cabinet of natural curiosities of his Highness the Stadtholder of the United Provinces, of which I have been obligingly permitted to take the figure of a female by Monf. Vofmar, to whom I owe my public acknowledgments for it.’—99. *tab. 26.*

PROPERTY OF  
Z. P. METCALF

HEMIPTERA.



\* *Fulgora lineata.*    \* *Fulgora pallida.*  
\*\* *Cicada indica.*



HEMIPTERA.

---

✓ **FULGORA LINEATA.**

**SPECIFIC CHARACTER.**

Trunk linear, ascending: wing-cafes pale, with two brown lines.

**FULGORA LINEATA:** fronte rofrata lineari adfcendente, elytris pallidis: lineis duabus fufcis.

---

A pretty little undefcribed species found in Bengal, where it is not very uncommon.

---

✓ **FULGORA PALLIDA.**

**SPECIFIC CHARACTER.**

Trunk linear, ascending: thorax pale green, with red lineations; wing-cafes hyaline.

**FULGORA PALLIDA:** fronte rofrata lineari adfcendente thorace pallide viridi rubro lineato elytris hyalinis.

---

From the fame place as the preceding infect.

*H E M I P T E R A.*

---

C I C A D A I N D I C A.

S P E C I F I C C H A R A C T E R.

Black; on the thorax a yellow stripe; towards the extremity of the abdomen an orange band: wing-veins brownish olive with red veins.

CICADA INDICA: nigra thorace fascia flava abdomine postice fascia aurantia, elytris fulco-olivaceis venis rubris.

---

This is unquestionably one of the most striking and magnificent species of Cicada we are acquainted with. A single specimen of this kind was discovered in Bengal by Mr. Fichtel about four years ago. It is now deposited in the Imperial cabinet at Vienna.



EMIPTERA.



*Mantis Gigas*

London: Published as the Act directs by E. Dineen Tab. 158.



HEMIPTERA.



*Mantis Viridis.*



HEMIPTERA.



*Mantis ficifolia.*

London: Ed. by W. H. Edwards & Co. 1850. - August 1. 1850.



## HEMIPTERA.

---

### MANTIS GIGAS.

#### GENERIC CHARACTER.

Head flaking, or unsteady, armed with jaws, and furnished with filiform palpi. Antennæ fetaceous. Wings four, membranaceous, convoluted, inferior ones folded. Anterior legs compressed, ferrated with teeth beneath, and armed with a single claw. Four posterior ones smooth, and formed for walking. Thorax linear, elongated, and narrow.

#### SPECIFIC CHARACTER.

Thorax roundish, and scabrous; wing-veins very short; legs spinous.

MANTIS GIGAS: thorace teretiusculo scabro, clytris brevissimis, pedibus spinosis. *Linn. Gmel.* 2048.  
*Sp. 1.—Fab. Spec. Ins. 1. p. 345. n. 1.—Phasma Gigas. Fab. Ent. Syst.*

---

The largest of this very extraordinary genus known. Our specimen is from the island of Amboyna. Rare.

---

### MANTIS VIRIDIS.

#### SPECIFIC CHARACTER.

Green, thorax round, glabrous: wing-veins very short: wings pale testaceous with a green costal rib: legs simple.

MANTIS VIRIDIS: thorace tereti glabro, clytris brevissimis, alis pallido-testaceis costa viridi pedibus simplicibus.

PHASMA EDULE, fem. *Lichtenstein in Linn. Trans. vol. 6. p. 13?*

---

Perhaps more scarce than the preceding insect. This we also received from Amboyna.

---

### MANTIS SICCIFOLIA.

#### SPECIFIC CHARACTER.

Thorax denticulated; thighs oval and membranaceous.

MANTIS SICCIFOLIA: thorace denticulato, femoribus ovatis membranacis. *Linn. Mus. Lud. Urb.* 111.—  
*Fabr. Spec. Ins. 1. p. 347. n. 14.*

## H E M I P T E R A.

An erroneous opinion has prevailed pretty generally among naturalists respecting the colour of this insect, which when living they conceived to be similar to that of a dried, or withered leaf. This, it may be observed, is commonly the appearance of the insect after death: such was no doubt the colour of the specimens delineated by Roefel; nor can we for a moment hesitate in believing that the insects described by the accurate Linnaeus and Dr. Shaw exhibited the like appearance. The specimen of the winged insect in our cabinet has been preserved however with more than usual care. Immediately after the death of the creature, as we have reason to suspect, the abdomen had been opened, and so nicely excavated that no portion of the entrails, or oily fluids, which would have inevitably destroyed the true colour, was allowed to remain. The natural colour is therefore preserved, which is not of a pale brown as is commonly imagined, but of a delicate, lovely green; a colour dependant, it appears, upon a thin internal coating immediately beneath the outer skin, the latter of which is perfectly transparent and destitute of any colour.

The pupa of this curious species is represented, together with the perfect insect, on the *Vinca Rofea*.

There is also a much smaller pupa depicted in the upper part of the plate, that was discovered in one of the islands in the Indian seas, and did belong to the celebrated Mr. Bailey, the astronomer who sailed in one of the expeditions with Captain Cook. This is of an analogous kind to that of that *Mantis ficcifolia*, though evidently distinct. The perfect insect, and in consequence the species, is unknown to us. Our only motive for inserting it is to shew the peculiar singularity of the abdomen, in the middle of which there are two remarkable subquadrangular spots, of a silny texture, that are transparent, and may be seen through very distinctly.



HEMIPTERA.



*Gryllus Monstruosus.*

*Gryllus reticulatus.*

*Gryllus punctatus.*

## HEMIPTERA.

---

### GRYLLUS RETICULATUS.

#### GENERIC CHARACTER.

Head inflected, furnished with jaws: palpi filiform. Antennæ setaceous, or filiform: wings four, deflected, and convolute; lower ones folded: posterior legs formed for leaping, claws double on all the feet.

#### SPECIFIC CHARACTER.

Thorax boat-shaped, posterior part produced and acute: wing-veins reticulated.

GRYLLUS RETICULATUS: thorace cymbiformi posteriori producto acuto, elytris reticulatis. *Fab. Spec. Ins.* 1. p. 362. n. 7.—*Gmel. T. 1. p. 4 p. 2073. Sp. 4.*—UNFIGURED.

---

An inhabitant of Bengal. There is a specimen of this very rare insect in the cabinet of Sir Joseph Banks, Bart.

---

### GRYLLUS PUNCTATUS.

#### SPECIFIC CHARACTER.

Thorax warted: wing-veins black dotted with yellow: wings black.

GRYLLUS PUNCTATUS: thorace verrucoso, elytris atris flavis punctatis, alis atris. *Fab. Spec. Ins.* 1. p. 364. n. 14.—*Gmel. T. 1. p. 4. p. 2074. Sp. 143.*

HEMIPTERA.

---

GRYLLUS MONSTROSUS.

SPECIFIC CHARACTER.

Wings, and wing-veins terminating in a tail-like convolution.

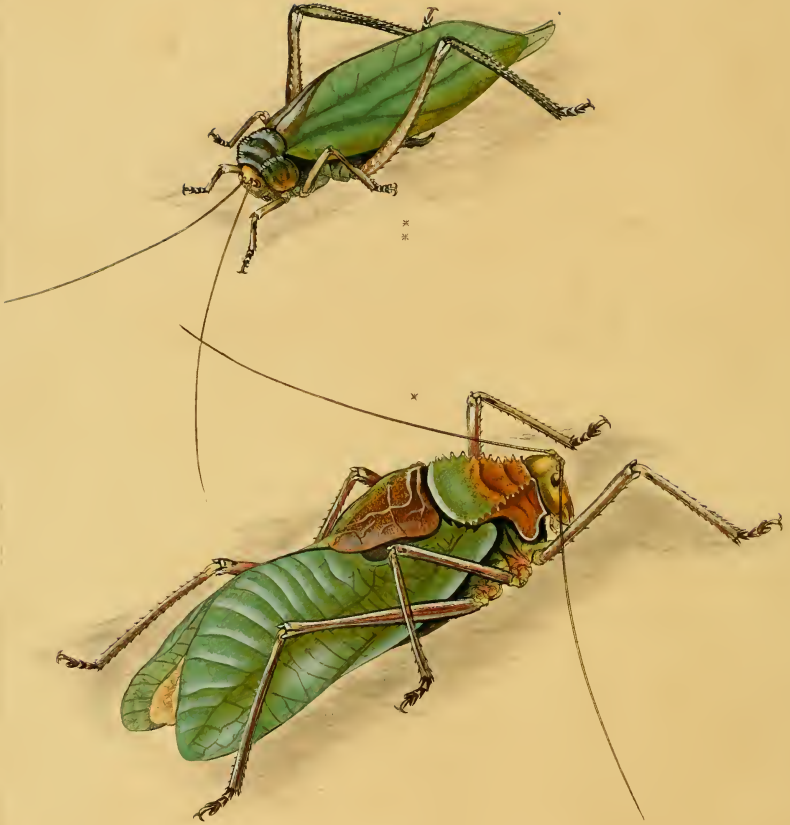
GRYLLUS MONSTROSUS: elytris alifque caudato-convolutis. *Fab. Spec. Inf.* 1. p. 353. n. 2.—*Gmel.*  
*T.* 1. p. 4. p. 2059. *Sp.* 73.

---

This very singular creature is found in the vicinity of Bengal, where, according to the information of Mr. Fichtel, it is by no means common. It lives under ground like the *Gryllus Campestris*, and some other well known analogous European insects of this tribe.



HEMIPTERA.



• *Locusta Aml'omensis. Locusta citrifolia.* •



## HEMIPTERA.

---

### LOCUSTA AMBOINENSIS.

#### AMBOYNA LEAF-LOCUST.

##### GENERIC CHARACTER.

Antennæ fetaceous : feelers unequal : tail of the female armed with an ensiform weapon.

##### SPECIFIC CHARACTER.

Green : thorax quadrangular with the angles dentated : scutellum large, brown-green ; wing-cases leaf-shaped and very broad.

*LOCUSTA AMBOINENSIS* : viridissima, thorace tetragona angulis dentatis, scutello magno fusco-viridi, elytris foliaceis latissimis.—*UNFIGURED*.

---

The only specimen we have ever seen of this elegant species is that delineated in the annexed plate with *Locusta citrifolia*. This insect was received from Amboyna some years ago by Governor Holford, then resident in India, and is at this time in the collection of the Author.

Both the elytra, or wing-cases, and the posterior part of the thorax, are of a fine delicate green: the anterior part of the thorax yellowish brown; with the head, and body still paler. The wing-cases, as usual in this tribe, bear no very distant resemblance to the leaves of certain plants, not only in colour but also in the outline, and still more so in the conformation of the nerves which arise and branch off towards the extremities, exactly in the same manner as the nerves arise, and ramify, from the mid-rib in the leaves of the far greater number of plants. One peculiarity in the structure of the elytra in our new species deserves remark: the scutellum, or rather that portion of the wing-case on the left side that folds over the back when the creature is at rest, is of a much stronger texture than any other part of the insect except the thorax, and serves as an external covering or defence to the corresponding lobe of the other wing-case, which is of a more delicate nature, consisting only of a thin and pellucid membrane, the surface of which is hyaline or glassy. The wings are remarkably tender, of a whitish colour, and semitransparent.

HEMIPTERA.

---

LOCUSTA CITRIFOLIA.

CITRON-LEAF LOCUST.

SPECIFIC CHARACTER.

Thorax quadrangular: crenated at the angles.

LOCUSTA CITRIFOLIA: thorace tetragona: angulis crenatis. *Fab. Ent. Syst. T. 2. p. 33. Sp. 1.*

GRYLLUS CITRIFOLIUS. *Linn. Syst. Nat. 2. 695. 16.—Mus. Lud. Ultr. 125.*

---

Received with the preceding insect from Amboyna.



HEMIPTERA.



*Cimex virripes.*      *papiliofus, cruciatus.*  
*maculans, uniguttatus.*      *viridis, ferratus.*

## HEMIPTERA.

---

### CIMEX NIGRIPES.

#### GENERIC CHARACTER.

Snout inflexed. Antennæ filiform, longer than the thorax. Wings four, folded across each other, the anterior part of the upper pair coriaceous. Back flat, thorax margined: legs formed for running.

#### SPECIFIC CHARACTER.

Above sanguineous with two black spots on the scutel, and a single one on each of the wing-veins.

CIMEX NIGRIPES: supra sanguineus scutello maculis duabus elytris unica nigris. *Fab. Ent. Syst. T. 4. p. 106. Sp. 101.*

Cimex Melanopus. *Gmel. p. 2149.*—Cimex Incarnatus. *Drury. Inf. 2. t. 36. f. 5.*

---

This beautiful species bears a distant similitude to Cimex Aurantius, described by us among the insects of China; it is found in the environs of Batavia, as we are informed, but is by no means common there.

---

### CIMEX PAPILLOSUS.

#### SPECIFIC CHARACTER.

Ovate, brown, antennæ black, sternum gibbous and compressed.

CIMEX PAPILLOSUS: ovatus fuscus, antennis nigris, sterno gibbo compresso. *Fab. Spec. Inf. p. 356. Sp. 112.*

---

Professor Thunberg describes this Cimex under the name of Chinenfis. Our figures represent both the larva and the perfect insect. That our specimens are from the East Indies need not admit of doubt: the same kind is mentioned as a native of Sierra Leona by some entomologists, perhaps without sufficient authority.

---

### CIMEX CRUCIATUS.

#### SPECIFIC CHARACTER.

Pale yellow with black spots; scutel black with a pale cross.

CIMEX CRUCIATUS: nigro pallidoque variis scutello nigro: cruce alba. *Fab. Ent. Syst. T. 4. p. 119. Sp. 153.*—UNFIGURED.

---

Described only by Fabricius, who acquaints us that it was found in the East Indies by Dr. Koenig. We possess a specimen of this species from Bengal.

## HEMIPTERA.

---

### CIMEX MACTANS.

#### SPECIFIC CHARACTER.

Oblong, above rufous, two black dots on the thorax, and on the scutel two.

CIMEX MACTANS: oblongus supra rufus, thorace, scutelloque punctis duobus nigris. *Fab. Spec. Ins.* 2. 366. *Sp.* 168.—UNFIGURED.

---

---

### CIMEX UNIGUTTATUS.

#### SPECIFIC CHARACTER.

Thorax with acute spines, ferruginous; scutel marked with a large white dot.

CIMEX UNIGUTTATUS: thorace acute spinoso ferrugineis, scutello puncto magno albo notata. UNFIGURED.

---

---

A curious species. This is a native of Madras.

---

---

### CIMEX VIRIDIS.

#### SPECIFIC CHARACTER.

Thorax spinous, green: wing-cafes brownish grey, scutel at the apex yellowish: spines on the thorax cylindrical, and truncated.

CIMEX VIRIDIS: thorace spinoso viridis; elytris fusco-cinereis, scutello apice flavescente; thoracis spinis cylindricis truncatis. UNFIGURED.

---

---

This rare insect is from Ceylon.

---

---

### CIMEX SERRATUS.

#### SPECIFIC CHARACTER.

Thorax with acute spines, testaceous; wing-cafes greenish: abdomen ferrated.

CIMEX SERRATUS: thorace acute spinoso testaceus; elytris virefcens, abdomine ferrato. UNFIGURED.



LEPIDOPTERA



*Papilio Priamus.*





LEPIDOPTERA.



\* *Papilio Antenor.*      *Papilio Antiphæus.* \*

# LEPIDOPTERA.

---

## PAPILIO ANTENOR.

### GENERIC CHARACTER.

Palpi two, reflected. Tongue spiral, exerted. Antennæ terminating in a club.

### SPECIFIC CHARACTER.

Wings tailed, both above and beneath black with white spots; a marginal series of red lunated spots on the posterior pair.

PAPILIO ANTENOR: alis candidis concoloribus atris albo maculatis: posticis lunulis marginalibus rubris. *Fab. Ent. Syst. T. 3. p. 1. p. 4. Sp. 9.*

---

Papilio Antenor is an insect of very interesting figure, and may be numbered with much propriety among the rarest of the Papilio tribe found in India. It is delineated both in the works of Drury, and Jablonky.

---

## PAPILIO ANTIPHUS.

### SPECIFIC CHARACTER.

Wings tailed, above and beneath black, with seven lunar red spots on the posterior pair.

PAPILIO ANTIPHUS: alis caudatis concoloribus nigris: posticis lunulis septem rubris. *Fab. Ent. Syst. T. 3. p. 1. p. 10. Sp. 28.—UNFIGURED.*

---

## PAPILIO PRIAMUS.

### SPECIFIC CHARACTER.

Wings denticulated, silky: anterior pair green above with a black disk: fix black spots on the posterior ones.

PAPILIO PRIAMUS: alis denticulatis holosericis: anticis supra viridibus; macula atra, posticis maculis fex nigris. *Linn. Syst. Nat. 2. 744. 1.—Mus. Lud. Ulr. 182.—Amœn. Acad. 5 tab. 3.—Clerk. Icon. tab. 17.*

## L E P I D O P T E R A.

With the exception of *Papilio Ulyffes*, which perhaps in point of splendour may excel, *Papilio Priamus* is beyond comparison the most lovely creature of this tribe of insects hitherto discovered, either in India or any other country. It is a native of Amboyna, where we understand it is extremely rare, and bears a considerable price among the Dutch amateurs in that island. We obtained a pair of them in fine condition some years ago from the cabinet of the late Mr. Tunfall, who had purchased them in Holland, from a collection made by one of the Dutch governors in Amboyna. This rarity is figured in a resting position on the blossoms of the *MIMOSA GRANDIFLORA*.

---

---

### PAPILIO DIEPHOBUS.

#### SPECIFIC CHARACTER.

Wings tailed, brown; beneath spotted at the base with red; seven subannular red spots on the posterior pair.

*PAPILIO DIEPHOBUS*: alis caudatis nigris basi rubro maculatis, posticis maculis septem rubris subannularibus. *Linn. Syst. Nat.* 2. 746. 7.

---

---

### PAPILIO LACEDEMON.

#### SPECIFIC CHARACTER.

Wings dentated, black, with a marginal series of whitish lunar spots: posterior ones beneath brown with black lunar spots.

*PAPILIO LACEDEMON*: alis dentatis nigris: lunulis marginalibus albidis: posticis subtus brunneis: lunulis nigris. *Fab. Ent. Syst. T.* 3. p. 1. p. 36. *Sp.* 107.—*UNFIGURED*.

LEPIDOPTERA.



*Papilio Empedocles.* *Papilio Deiphobus.*  
*Papilio Sacedemoni.*





LEPIDOPTERA.



*Papilio Panthous.*





LEPIDOPTERA.



\* *Papilio Helicon*.

*Papilio Icarus*. \*

## HEMIPTERA.

---

### PAPILIO PANTHOUS.

#### SPECIFIC CHARACTER.

Dentated, anterior wings black, with white marks. Posterior chiefly white, with black spots.

PAPILIO PANTHOUS: alis dentatis concoloribus nigris; anticis albo maculatis, posticis maculis albis nigro fæctis. *Linn. Syst. Nat.* 2. 748. 17.

*Fab. Ent. Syst. T.* 3. p. 1. p. 18. *fp.* 56.

---

This noble species is figured in a resting position on a flower of the *Double variegated Japan Rose*, a scarce variety of the *Camellia Japonica*. It is one of the many magnificent natural productions of Amboyna, and is extremely rare.

The supposed female of this insect is also considered as the female of *Papilio Priamus*; it is a gigantic creature, being still larger than the butterfly represented, but it is less beautiful, and the general colour an obscure reddish brown.

---

### PAPILIO HELIACON.

#### SPECIFIC CHARACTER.

Dentated. Anterior wings uniform black: posterior pair yellow in the disk, with spots of black.

PAPILIO HELIACON: alis dentatis concoloribus nigris; posticis disco flavo nigro punctato.

*Fab. Ent. Syst. T.* 3. p. 1. p. 19. *fp.* 60.—UNFIGURED.

---

An insect from the East Indies, in the cabinet of Sir Joseph Banks, Bart.

## HEMIPTERA.

---

### PAPILIO IDÆUS.

#### SPECIFIC CHARACTER.

Wings dentated, black. A short yellow dash across the anterior margin of the first pair. Second pair spotted with red; a palmated mark of three red spots in the middle.

PAPILIO IDÆUS: alis dentatis nigris: anticis fascia abbreviata flava, posticis macula palmata trifida punctisque sanguineis. *Fab. Ent. Syst. T. 1. p. 1. p. 16. sp. 48.*—UNFIGURED.

---

Brought from Madras.

---

### PAPILIO ASTYANAX.

#### SPECIFIC CHARACTER.

Wings dentated, black. A forked broad whitish band across the anterior pair. Posterior pair spotted with red.

PAPILIO ASTYANAX: alis dentatis concoloribus nigris: anticis fascia sesquialtera firiata alba, posticis rubro maculatis. *Fab. Ent. Syst. T. 3. p. 1. p. 13. 37.*—UNFIGURED.

---

This species is described only by Fabricius in his *Entomologia Systematica*, and must not be confounded with the *P. Astyanax* in the *Species Insectorum* of the same author, that being a very distinct insect, and a native of America.

---

### PAPILIO POLYMNESTOR.

#### SPECIFIC CHARACTER.

Wings dentated, black. Posterior part of the lower pair bluish, with rows of black spots.

PAPILIO POLYMNESTOR: alis dentatis subconcoloribus nigris: posticis apice cœrulefcentibus nigro maculatis. *Fab. Ent. Syst. T. 3. p. 1. p. 18. sp. 55.*

---

This remarkably fine species is found in several parts of Asia; it is rare, but has been figured by *Cramer* and *Jablonsky*.

LEPIDOPTERA.



*Papilio Astyanax.*

*Papilio Polymnestor.*





LEPIDOPTERA.



*Papilio Ulysses.*





LEPIDOPTERA.



*Papilio Evallthe*.

London, Published as the Act directs by F. Donovan, March 1. 1843.

LEPIDOPTERA.

PROPERTY OF  
Z. P. METCALF

---

PAPILIO EMPEDOCLES.

SPECIFIC CHARACTER.

Wings tailed, brown: on the first pair an abbreviated band, and spots of green.

PAPILIO EMPEDOCLES: alis caudatis fuscis: anticis fascia abbreviata maculari viridi, posticis fuscis maculis duabus anguli ani. *Fab. Ent. Syll. T. 3. p. 1. p. 70. Sp. 217.*—UNFIGURED.

---

---

PAPILIO ULYSSES.

SPECIFIC CHARACTER.

Wings tailed, black: disk radiate, blue: seven ocellated spots on the under side.

PAPILIO ULYSSES: alis caudatis nigris: disco caeruleo radiante, posticis fuscis ocellis septem. *Linn. Syll. Nat. 2. 748. 21.*

---

---

Our specimens are from one of the Dutch spice islands in the East Indies.

---

---

PAPILIO EVALTHE.

SPECIFIC CHARACTER.

Wings entire, black: two yellow bands on the anterior ones; and one of yellow, with red spots on the posterior pair. Under side red, with a band of yellow spots.

PAPILIO EVALTHE: alis integerrimis nigris: anticis fasciis duabus, posticis unica flavis maculisque rubris, fuscis rubris: fascia maculari flava. *Fab. Ent. Syll. T. 3. p. 1. p. 45. Sp. 136.*

---

---

A scarce and beautiful species: represented on a sprig of the VITEX NEGUNDO, FINE-LEAVED CHASTE TREE.

# LEPIDOPTERA.

---

## PAPILIO LETHÉ.

### SPECIFIC CHARACTER.

Wings dentated, tailed, and fulvous: anterior pair black, yellowish at the base, with two stripes and fulvous spots.

PAPILIO LETHÉ: alis dentato caudatis fulvis: anticis apice nigris: fascia apiceque flavis.  
*Fab. Ent. Syll. T. 3. p. 1. p. 80. Sp. 250.—UNFIGURED.*

---

## PAPILIO COCLES.

### SPECIFIC CHARACTER.

Wings slightly tailed, whitish, with streaks of brown: in the middle a whitish green stripe; on the lower ones beneath a row of ocellated dots.

PAPILIO COCLES: alis subcaudatis albo flavescensque frigidis: fascia media alba, posticis fuscis striga punctorum ocellatorum. *Fab. Ent. Syll. T. 3. p. 1. p. 65. Sp. 204.—UNFIGURED.*

---

This delicate insect is a native of Siam.

---

## PAPILIO TIRIDATES.

### SPECIFIC CHARACTER.

Wings dentated, with two tails: above black with blue spots, and a marginal row of pale yellow dots.

PAPILIO TIRIDATES: alis dentato bicaudatis: supra nigris cœruleo maculatis margineque albo punctato.  
*Fab. Ent. Syll. T. 3. p. 1. p. 62. Sp. 195.*

---

Inhabits Amboyna.

LEPIDOPTERA.



*Papilio Letho.*      *Papilio Cyclos.\**  
\* \* *Papilio Teridates.*





LEPIDOPTERA.



*Papilio Idea.*





LEPIDOPTERA.



*Papilio Hippias.*      *Papilio Affinis.\**  
*Papilio Philomela.*

## LEPIDOPTERA.

---

### PAPILIO IDEA.

#### SPECIFIC CHARACTER.

Wings semi-transparent, white, veined and spotted with black.

PAPILIO IDEA: alis denudato-albis: venis maculifque nigris. *Fab. Spec. Inf. 2. p. 38. n. 160.*—*Gmel. p. 2258. Sp. 73.*

---

There is a peculiar delicacy in the appearance of this large and rare Papilio that strongly recommends itself to our attention, and, notwithstanding that the figure of it has a place already in several works on entomology, impels us to include it in the present selection of Indian Insects. Clerk, Cramer, and Drury, have each given a delineation of it, the latter of whom names it Papilio Lynceus; but it is almost superfluous to add, that it is beyond dispute the Papilio Idea of Linnæus. Our specimens are from Amboyna, and are represented on the common *Indian Yellow Jasmine*.

---

### PAPILIO HIPPIA.

#### SPECIFIC CHARACTER.

Wings greenish white, veins and border black.

PAPILIO HIPPIA: alis repandis virefcenti albis: venis limboque nigris. *Fab. Ent. Syst. T. 3. p. 1. p. 59. Sp. 185.*—UNFIGURED.

---

### PAPILIO AFFINIS.

#### SPECIFIC CHARACTER.

Wings dentated, black, with white spots: border of the posterior one beneath black, spotted with yellow and white.

PAPILIO AFFINIS: alis dentatis nigris albo maculatis: posticis subtus limbo nigro flavo alboque maculato. *Fab. Ent. Syst. T. 3. p. 1. p. 58. Sp. 181.*—UNFIGURED.

## LEPIDOPTERA.

---

### PAPILIO PHILOMELA.

#### SPECIFIC CHARACTER.

Wings black, spotted with white; posterior pair radiated with yellow at the base.

PAPILIO PHILOMELA: alis repandis nigris albo maculatis: posticis basi flavo radiatis. *Fab. Ent. Syst.*  
*T. 3. p. 1. p. 57. Sp. 179.—UNFIGURED.*

---

From a specimen in the cabinet of the Right Hon. Sir Joseph Banks, Bart.

---

### PAPILIO LEUCIPPE.

#### SPECIFIC CHARACTER.

Wings entire: anterior pair orange, with a black margin: posterior ones yellow.

PAPILIO LEUCIPPE: alis integerrimis: anticis rubris; margine nigro, posticis flavis. *Fab. Ent. Syst.*  
*T. 3. p. 1. p. 198. Sp. 617.*

---

A very rare and elegant species from the island of Amboyna. The under side is of a lovely yellow, with shades of orange, sprinkled with a palish brown.

---

### PAPILIO DANÆ.

#### SPECIFIC CHARACTER.

Wings rounded, white: a reddish (or saffron coloured) spot at the tip of the anterior pair, with a black band, and margin; beneath a moniliform abbreviated streak.

PAPILIO DANÆ: alis rotundatis albis: anticis apice croceis; margine fasciaque nigris, subtus friga moniliformi abbreviata. *Fab. Ent. Syst. T. 3. p. 1. p. 203. Sp. 635.—UNFIGURED.*

---

Fabricius, in addition to the specific character of this beautiful Butterfly, has given a copious and very minute description of it, as one that had not been figured by any author. Our specimen is from the Myfore country.

LEPIDOPTERA.



\* *Papilio Leucippe.*      *Papilio Danae.* \*





LEPIDOPTERA.



*Papilio Morula* ❖

❖ *Eucharis Genutia* ❖

❖ *Fulvii Libythea* ❖



## LEPIDOPTERA.

---

### PAPILIO MAERULA.

#### SPECIFIC CHARACTER.

Wings entire, angulated, yellow: a black spot on the anterior pair above, and a ferruginous one beneath.

PAPILIO MAERULA: alis integris angulatis flavis: anticis supra macula atra, reliquis ferruginea.  
*Fab. Ent. Syll. T. 3. p. 1. p. 212. Sp. 664.*

---

---

### PAPILIO JUDITH.

#### SPECIFIC CHARACTER.

Wings entire, above and beneath alike: anterior wings white, with black veins and margin: posterior pair fulvous, with a black margin.

PAPILIO JUDITH: alis integerrimis subconcoloribus: anticis albis; venis margineque nigris, posticis fulvis margine nigris. *Fab. Ent. Syll. T. 3. p. 1. p. 202. Sp. 632.—UNFIGURED.*

---

---

### PAPILIO LIBYTHEA.

#### SPECIFIC CHARACTER.

Wings rounded, entire, and white: a costal brown spot at the base of the anterior ones, apex brown.

PAPILIO LIBYTHEA: alis rotundatis integerrimis albis: anticis costa baseos apiceque fuscis. *Fab. Ent. Syll. T. 3. p. 1. p. 190. Sp. 591.—UNFIGURED.*

---

---

### PAPILIO EUCHARIS.

#### SPECIFIC CHARACTER.

Wings rounded, entire, and white: first pair fulvous at the tip, with a black margin: second pair immaculate.

PAPILIO EUCHARIS: alis rotundatis integerrimis albis: anticis apice fulvis; margine nigro, posticis immaculatis. *Fab. Ent. Syll. T. 3. p. 1. p. 195. Sp. 605.—UNFIGURED.*

## LEPIDOPTERA.

---

### PAPILIO GENUTIA.

#### SPECIFIC CHARACTER.

Wings falcated, entire, white; anterior pair fulvous at the apex: lower ones marbled with green beneath.

PAPILIO GENUTIA: alis falcatis integerrimis albis: anticis apice fulvis, posticis viridi marmoratis.  
*Fab. Ent. Syfl. T. 3. p. 1. p. 193. Sp. 601.—UNFIGURED.*

---

---

### PAPILIO AMARYLLIS.

#### SPECIFIC CHARACTER.

Wings entire, above and beneath alike dull white, with a black lunated spot in the middle of the anterior ones.

PAPILIO AMARYLLIS: alis rotundatis integerrimis concoloribus obscure albidis: anticis lunula media nigra.. *Fab. Ent. Syfl. T. 3. p. 1. p. 189. Sp. 586.—UNFIGURED.*

---

---

### PAPILIO CASTALIA.

#### SPECIFIC CHARACTER.

Wings entire, white; above immaculate: beneath yellowish at the base.

PAPILIO CASTALIA: alis integerrimis rotundatis albis supra immaculatis, subtus basi flavescensibus.  
*Fab. Ent. Syfl. T. 3. p. 1. p. 188. Sp. 580.—UNFIGURED.*

---

---

### PAPILIO SCYLLA.

#### SPECIFIC CHARACTER.

Wings entire, rounded, yellow: anterior pair above white, bordered with black: all clouded beneath.

PAPILIO SCYLLA: alis integerrimis rotundatis flavis: anticis supra albis; limbo nigro, subtus omnibus nebulosis. *Linn. Syfl. Nat.—Fab. Ent. Syfl. T. 3. p. 1. p. 201. Sp. 630.*

---

The three last species are represented on *Dolichos Lignosus*.



LEPIDOPTERA.



\* *Papilio Cincta.*    *Papilio stans.* \*  
\* \* *Papilio Pyrreus.*



LEPIDOPTERA.



\* *Papilio Menetho.*      *Papilio Arcesilaus.*  
\* \* — *Blandina.*      — *Liberia.* \* \*

## LEPIDOPTERA.

---

### PAPILIO CACTA.

#### SPECIFIC CHARACTER.

Wings angulated, indented: anterior pair black, purple at the base, with a fulvous spot.

PAPILIO CACTA: alis angulato dentatis: anticis nigris basi purpureis: macula fulva. *Fab. Ent. Syll.*  
*T. 3. p. 1. p. 116. Sp. 356.—UNFIGURED.*

---

### PAPILIO OCTAVIUS.

#### SPECIFIC CHARACTER.

Wings tailed, and black, with an abbreviated green band: beneath grey, with a brown streak.

PAPILIO OCTAVIUS: alis caudatis nigris: fascia abbreviata viridi, fubtus grifeis: friga fufca.  
*Fab. Ent. Syll. T. 1. p. 1. p. 73. Sp. 228.—UNFIGURED.*

---

### PAPILIO PYRRHUS.

#### SPECIFIC CHARACTER.

Wings tailed, brown, with a common white band.

PAPILIO PYRRHUS: alis caudatis fufcis, fascia communi alba anticarum dimidiata.  
*Linn. Syll. Nat. 2. 749.*

---

### PAPILIO MENETHO.

#### SPECIFIC CHARACTER.

Wings indented, brown, with a marginal series of yellow spots: two ocellated marks on the under side of the posterior pair.

PAPILIO MENETHO: alis dentatis fufcis: margine flavo maculato, posticis fubtus ocellis duobus.  
*Fab. Ent. Syll. T. 3. p. 1. p. 83. Sp. 260.—UNFIGURED.*

## L E P I D O P T E R A.

---

### PAPILIO ARCESILAUS.

#### SPECIFIC CHARACTER.

Wings entire, above ferruginous, and without spots: beneath brown, with three dark streaks, and a row of white dots.

PAPILIO ARCESILAUS: alis integerrimis supra ferrugineis immaculatis, subtus fuscis: frigis duabus obfcurioribus *Fab. Ent. Syst. T. 3. p. 1. p. 153. Sp. 470.—UNFIGURED.*

---

Fabricius describes this species from a specimen in the cabinet of the Right Hon. Sir J. Banks, Bart. It is a native of Siam.

---

---

### PAPILIO BLANDINA.

#### SPECIFIC CHARACTER.

Wings indented, black, spotted with white: a blue streak at the base of the anterior pair; and another at the margin of the posterior ones.

PAPILIO BLANDINA: alis dentatis atris albo maculatis: anticis fascia basalis posticis fascia marginali cæruleis. *Fab. Ent. Syst. T. 3. p. 1. p. 129. Sp. 397.—UNFIGURED.*

---

### PAPILIO LIBERIA.

#### SPECIFIC CHARACTER.

Wings indented, fulvous, with a black curved mark at the tip of the anterior pair: a black dot on the posterior ones above, and three ocellated spots beneath.

PAPILIO LIBERIA: alis dentatis fulvis: anticis arcu apicis, posticis supra puncto atro, subtus tribus ocellaribus. *Fab. Ent. Syst. T. 3. p. 1. p. 135. Sp. 418.—UNFIGURED.*

---

### PAPILIO PHEGEA.

#### SPECIFIC CHARACTER.

Wings indented, brown; with either a white or ferruginous band on the anterior pair: disk of the posterior ones ferruginous or white; beneath paler with black waves.

PAPILIO PHEGEA: alis dentatis fuscis: anticis fascia posticis disco ferrugineo aut albo, subtus pallidioribus nigro undatis. *Fab. Ent. Syst. T. 3. p. 1. p. 132. Sp. 407.—UNFIGURED.*



LEPIDOPTERA.



*Papilio Phegea*. \*    \*\* *Tratoma Thyelia*. \* \*





LEPIDOPTERA.



*Papilio Nero*      *Papilio Gnidia*;  
*Papilio Hübneri*

## LEPIDOPTERA.

---

### PAPILIO FATIMA.

#### SPECIFIC CHARACTER.

Wings slightly, tailed black, with a common yellow; posterior ones with the band abbreviated and red spots.

PAPILIO FATIMA: alis subcaudatis atris: fascia communi flava, posticarum abbreviata maculisque rubris.  
*Fab. Ent. Syst. T. 3. p. 1. p. 81. Sp. 252.—UNFIGURED.*

---

### PAPILIO THYELIA.

#### SPECIFIC CHARACTER.

Wings dentated, fulvous with black spots: on the base of the posterior pair beneath a white band, and two scarlet dots at the base.

PAPILIO THYELIA: alis dentatis fulvis nigro maculatis: posticis subtus fascia alba punctisque duobus  
basicos coccineis *Fab. Ent. Syst. T. 3. p. 1. p. 142. Sp. 437.—UNFIGURED.*

---

### PAPILIO NERO.

#### SPECIFIC CHARACTER.

Wings entire, sanguineous, margin brownish: posterior wings beneath orange.

PAPILIO NERO: alis integerrimis sanguineis: margine fuscante, posticis subtus aurantiis.  
*Fab. Ent. Syst. T. 3. p. 1. p. 153. Sp. 471.—UNFIGURED.*

---

The Fabrician description of this fine Papilio is taken from a specimen in the British Museum.

---

### PAPILIO GNIDIA.

#### SPECIFIC CHARACTER.

Wings dentated, testaceous: anterior pair brown at the apex, with a white band; posterior ones with a fulvous streak, and black lunated spots.

PAPILIO GNIDIA: alis dentatis testaceis anticis apice fuscis, fascia alba, posticis friga fulva: lunulis  
nigris. *Fab. Ent. Syst. T. 3. p. 1. p. 137. Sp. 422.—UNFIGURED.*

## LEPIDOPTERA.

---

### PAPILIO HIARBA.

#### SPECIFIC CHARACTER.

Wings dentated, black, with a common white band, abbreviated on the anterior pair.

PAPILIO HIARBA: alis dentatis nigris: fascia communi alba anticarum abbreviata. *Fab. Ent. Syll.*  
*T. 3. p. 1. p. 128. Sp. 391.*

---

### PAPILIO ISIS.

#### SPECIFIC CHARACTER.

Wings dentated; anterior pair black with the disk fanguineous: beneath entirely lined with green.

PAPILIO ISIS: alis dentatis: anticis atris; macula disci fanguinea, omnibus subtus viridi lineatis.  
*Fab. Ent. Syll. T. 3. p. 1. p. 124. Sp. 377.—UNFIGURED.*

---

### PAPILIO PHORCYS.

#### SPECIFIC CHARACTER.

Wings dentated, slightly tailed, and brown: beneath obscurely streaked, with two cinereous spots on the posterior pair.

PAPILIO PHORCYS: alis dentato subcaudatis fuscis: subtus obscurius streaked: posticis punctis duobus cinereis. *Fab. Ent. Syll. T. 3. p. 1. p. 80. Sp. 248.—UNFIGURED.*

---

### PAPILIO ERIBOTES.

#### SPECIFIC CHARACTER.

Wings slightly tailed, fulvous, blueish at the base: beneath grey.

PAPILIO ERIBOTES: alis subcaudatis fulvis basi caeruleiscentibus, subtus griseis. *Fab. Ent. Syll. T. 3. p. 1. p. 73. Sp. 229.—UNFIGURED.*

LEPIDOPTERA.



*Papilio Isis.*

*Papilio Phoenix.*

*Eriotes Isidore.*







LEPIDOPTERA.



*Papilio Cyathippe.*      *Papilio Dione.*  
*Papilio Euronimene.*

## LEPIDOPTERA.

---

### PAPILIO ISIDORE.

#### SPECIFIC CHARACTER.

Wings hooked, tailed, and fulvous: two pale dots in the middle of the anterior ones; tip black.

PAPILIO ISIDORE: alis falcato caudatis fulvis: anticis punctis duobus mediis pallidis apiceque nigris.  
*Fab. Ent. Syf. T. 3. p. 1. p. 78. Sp. 244.*

---

### PAPILIO CYDIPPE.

#### SPECIFIC CHARACTER.

Wings dentated, black with a common rufous disk: beneath testaceous at the base, and varied with black and blue.

PAPILIO CYDIPPE: alis dentatis nigris albo maculatis: area communi rufa, subtus basi testaceis nigro cæruleoque variis. *Linn. Syf. Nat. 2. 776. 136.—Fab. Ent. Syf. T. 3. p. 1. p. 112. Sp. 345.*

---

### PAPILIO DIRCE.

#### SPECIFIC CHARACTER.

Wings angulated, brown, with a yellowish band on the anterior ones: beneath undulated with blackish brown stripes.

PAPILIO DIRCE: alis angulatis fuscis: fascia anticarum flavescente, subtus nigro undulatis. *Linn. Syf. Nat. 2. 778. 771.—Fab. Ent. Syf. T. 3. p. 1. p. 123. Sp. 376.*

---

### PAPILIO EURINOME.

#### SPECIFIC CHARACTER.

Wings indented, black, spotted with white: posterior pair white at the base.

PAPILIO EURINOME: alis dentatis nigris albo maculatis: posticis basi albis. *Fab. Ent. Syf. T. 3. p. 1. p. 57. Sp. 173*

## LEPIDOPTERA.

---

### PAPILIO HIPPONA.

#### SPECIFIC CHARACTER.

Wings indented, tailed, varied with yellow and black: on the posterior ones four white dots.

PAPILIO HIPPONA: alis dentato caudatis flavo nigroque variis: posticis punctis quatuor albis.  
*Fab. Ent. Syst. T. 3. p. 1. p. 180. Sp. 559.*

---

### PAPILIO CYANE.

#### SPECIFIC CHARACTER.

Wings indented, black, a white band on the anterior wings; disk of the posterior ones white, dotted with black.

PAPILIO CYANE: alis dentatis nigris: anticis fascia, posticis disco nigro punctato albis.  
*Fab. Ent. Syst. T. 3. p. 1. p. 115. Sp. 352.*

---

### PAPILIO COENOBITA.

#### SPECIFIC CHARACTER.

Wings indented, black: anterior ones with a white streak and spots; posterior pair with a white band above, beneath white with four bands, and marginal spots of brown.

PAPILIO COENOBITA: alis dentatis nigris: anticis stria maculisque, posticis supra fascia alba, subtus albis: fasciis quatuor maculisque marginalibus fuscis. *Fab. Ent. Syst. T. 3. p. 1. p. 247. Sp. 769.—UNFIGURED.*

---

### PAPILIO COCALIA.

#### SPECIFIC CHARACTER.

Wings dentated, brown: anterior ones spotted with black and yellow; beneath entirely greyish, with a row of white dots.

PAPILIO COCALIA: alis dentatis fuscis: anticis nigro flavoque maculatis, subtus omnibus griseis. striga punctorum alborum. *Fab. Ent. Syst. T. 3. p. 1. p. 250. Sp. 777.—UNFIGURED.*

LEPIDOPTERA.



\* *Papilio Hippona.* *Papilio Cyane.* \*  
\* \* *Papilio Coenobita.*





LEPIDOPTERA.



*Papilio Cecalia.*

*Papilio Sophia.*

*Balthus.*

*Auge.*



## LEPIDOPTERA.

---

### PAPILIO SOPHIA.

#### SPECIFIC CHARACTER.

Wings dentated, variegated with yellow, fulvous, and black: margin brown, dotted with black, and white lunated spots on the posterior ones.

PAPILIO SOPHIA: alis dentatis flavo fulvo nigroque variis: margine fusco nigro punctato lunulifque posticarum albis. *Fab. Ent. Syst. T. 3. p. 1. p. 248. Sp. 771.—UNFIGURED.*

---

### PAPILIO AUGE.

#### SPECIFIC CHARACTER.

Wings dentated, brown: anterior ones fasciated with greenish: posterior pair fulvous spotted with black, with a black spot at the base beneath.

PAPILIO AUGE: alis dentatis fasciis: anticis fasciis viridibus, posticis fulva nigro maculata, fubtus bascos atro. *Fab. Ent. Syst. T. 3. p. 1. p. 248. Sp. 773.—UNFIGURED.*

---

### PAPILIO BALDUS.

#### SPECIFIC CHARACTER.

Wings entire, brown: an ocellated spot with a double pupil on the anterior wings; on the posterior pair four upon the upper side, and six beneath.

PAPILIO BALDUS: alis integerrimis fuscis: anticis utrinque ocello; pupilla gemina, posticis supra ocellis quatuor, fubtus sex. *Fab. Ent. Syst. T. 3. p. 1. p. 223. Sp. 699.—UNFIGURED.*

---

### PAPILIO PERIANDER.

#### SPECIFIC CHARACTER.

Wings tailed, above and beneath white striped with yellow: tips brown with white streaks.

PAPILIO PERIANDER: alis caudatis concoloribus albis flavo fasciatis fuscis albo strigosis. *Fab. Ent. Syst. T. 3. p. 1. p. 67. Sp. 208.—UNFIGURED.*

---

A rare species; from the Myfore country.

## LEPIDOPTERA.

---

### PAPILIO ALLICA.

#### SPECIFIC CHARACTER.

Wings dentated, above and beneath obscure fulvous, with numerous black dots, and smaller ones of white.

PAPILIO ALLICA: alis dentatis subconcoloribus obscure fulvis: punctis nigris numerosis albo fœtis.

*Fab. Ent. Syfl. T. 3. p. 1. p. 244. Sp. 761.*

---

Inhabits Siam.

---

### PAPILIO OBRINUS.

#### SPECIFIC CHARACTER.

Wings entire, above brown, with a green stripe on the anterior pair, and a ferruginous spot on the posterior ones: beneath greenish with a white band.

PAPILIO OBRINUS: alis integerrimis supra fuscis: fascia cœrulea maculaque ferruginea, subtus viridibus: fascia albicante. *Linn. Syfl. Nat. 2. 766. 113.*

---

### PAPILIO LIRIA.

#### SPECIFIC CHARACTER.

Wings somewhat dentated, cinereous, waved with brown: on the anterior wings a white stripe, and four white ocellated spots on the posterior pair.

PAPILIO LIRIA: alis subdentatis cinereis fusco undatis: anticis fascia alba, posticis punctis quatuor ocellaribus albis. *Fab. Ent. Syfl. T. 3. p. 1. p. 239. Sp. 747.—UNFIGURED.*

---

### PAPILIO CRANTOR.

#### SPECIFIC CHARACTER.

Wings entire, brown; on the posterior pair above an ocellated spot with a double pupil: beneath five, the first and fourth bipupillated.

PAPILIO CRANTOR: alis integerrimis fuscis: posticis supra ocello unico bipupillato subtus quinque primo quartoque bipupillato. *Fab. Ent. Syfl. T. 3. p. 1. p. 158. Sp. 489.—UNFIGURED.*

LEPIDOPTERA.



*Papilio Peruander.* \* \* \* \* \* *Allica. Ovirius.* \* \* \*

\* \* \* *Crantor. Liria.* \* \* \* \*



PROPERTY OF  
Z. P. METCALF

LEPIDOPTERA.



\* *Papilio Pann.*      *Papilio Pindarus.*  
\* \*  
\* *Papilio Uleanus.*

## PLEBEII RURALES.

### PAPILIO PANN.

#### SPECIFIC CHARACTER.

Wings tailed, brown; a yellow spot on the anterior pair, and another with a black mark in the middle, near the margin of the posterior pair: beneath, cinereous, with two black eyes in the anal angle.

HESPERIA PANN: alis caudatis fuscis; anticis macula fulva posticis atra submarginali, subtus cineris: ocellis duobus anguli ani. *Fab. Ent. Syst. 2. T. 3. p. 1. p. 276. sp. 67.—UNFIGURED.*

---

### PAPILIO PINDARUS.

#### SPECIFIC CHARACTER.

Three short tails, blue surrounded with black. Beneath brown, with spots of red and silver.

HESPERIA PINDARUS: alis subtricaudatis cæruleis: limbo atro, subtus fuscis argenteo fulvoque maculatis. *Fab. Ent. Syst. T. 3. p. 1. p. 262. 15.*

---

Fabricius describes this beautiful insect as a native of India, and for its figure refers only to the original drawings of William Jones, Esq. We have ascertained the species from those drawings, collated with the manuscript in the hand-writing of Fabricius, and on this authority give it a place in our selection of Indian Insects.

---

### PAPILIO VULCANUS.

#### SPECIFIC CHARACTER.

Two tails. Above dark brown with fulvous spots. Beneath yellow, variegated with fulvous streaks and silvery interlineations.

HESPERIA VULCANUS: alis bicaudatis supra fuscis fulvo maculatis, subtus frigidis fulvis flavis argenteisque variegatis. *Fab. Ent. Syst. T. 3. p. 1. p. 264. sp. 22.*

---

The figures of Papilio Vulcanus represent the male insect, the female is rather larger, the colours on the under side more obscure, and the silver stripes broader.

---

### PAPILIO CHITON.

#### SPECIFIC CHARACTER.

Three tails. Blue, surrounded with dark brown. Beneath yellowish white streaked with black.

HESPERIA CHITON: alis tricaudatis cæruleis: limbo fusco, subtus flavescenti albis nigro fasciatis. *Fab. Ent. Syst. T. 1. p. 2. p. 262. 16.*

---

The P. Phaleros of Linnæus agrees with this insect except the spot in the upper wing.

## PLEBEII RURALES.

---

### PAPILIO HERODOTUS.

#### SPECIFIC CHARACTER.

Tailed. Above, wings blue. Beneath green, with a row of black and white points on the posterior pair.

HESPERIA HERODOTUS: alis caudatis cœruleis subtus viridibus: posticis friga punctorum nigro alborum.  
*Fab. Ent. Syst. T. 3. p. 1. p. 286. sp. 100.—UNFIGURED.*

---

### PAPILIO PYTHAGORAS.

#### SPECIFIC CHARACTER.

Three tails. Above black, disk and posterior margin yellow. Beneath white, varied with streaks of black brown; a broad white space across the middle.

HESPERIA PYTHAGORAS: alis tricaudatis atris: limbo flavo, subtus nigris albo variis fasciaque media alba.  
*Fab. Ent. Syst. T. 3. p. 1. p. 259. sp. 6.—UNFIGURED.*

---

### PAPILIO FLORUS.

#### SPECIFIC CHARACTER.

Wings entire, red, margin black. The base of the under wings spotted with black.

HESPERIA FLORUS: alis integerrimis fulvis: margine nigro subtus basi nigro punctatis.  
*Fab. Ent. Syst. T. 3. p. 1. p. 310. sp. 176.—UNFIGURED.*

---

### PAPILIO LISIAS.

#### SPECIFIC CHARACTER.

Three tails. Above, anterior wings dark brown with an orange spot. Beneath, posterior wing white with black and brown marks.

HESPERIA LISIAS: alis tricaudatis: anticis fuscis; macula fulva, posticis subtus albis nigro maculatis.  
*Fab. Ent. Syst. T. 3. p. 1. p. 261. sp. 12.—UNFIGURED.*



LEPIDOPTERA.



\* *Papilio Chiton.*

\* *Papilio Herodotus.*

\* *Pythagorus.* \* *Florus.*





LEPIDOPTERA.



\* *Papilio Lisius.*      \* *Papilio Sophocles.* \*  
\* \* *Jarbas.* \* *Thales.* \* \*

## PLEBEII RURALES.

---

### PAPILIO SOPHOCLÉS.

#### SPECIFIC CHARACTER.

Two tails. Above black, the whole disk blue. Beneath white, with yellowish undulated marks: a red spot at the apex of the posterior pair.

HESPERIA SOPHOCLÉS: alis bicaudatis nigris: disco communi cœruleo, subtus albis: frigris undatis flavescensibus, posticis puncto apicis fulvo. *Fab. Ent. Syst.* 3. p. 267. 31.—UNFIGURED.

---

### PAPILIO JARBAS.

#### SPECIFIC CHARACTER.

Tailed. Above, fulvous, furrounded with dark brown. Beneath cinereous, streaked with white: two black spots on the posterior pair.

HESPERIA JARBAS: alis caudatis fulvis: limbo fusco, subtus cinereis: friga alba, posticis punctis duobus atris. *Fab. Ent. Syst.* T. 3. p. 1. p. 276. *fp.* 65.—UNFIGURED.

---

Brought from Siam. Cabinet of the Right Hon. Sir Joseph Banks, Bart.

---

### PAPILIO THALES.

#### SPECIFIC CHARACTER.

Two tails. Black. Under side marked with blue lunar spots; and a double abbreviated band of gold next the posterior margin of the lower wings.

HESPERIA THALES: alis bicaudatis atris subtus lunulis cœruleis: posticis fascia abbreviata submarginali aurea. *Fab. Ent. Syst.* 3. 268. 35.—UNFIGURED.

---

### PAPILIO MELIBŒUS.

#### SPECIFIC CHARACTER.

Two tails. Above, disk bluish, furrounded with brown. Beneath yellowish, anterior wings streaked across with brown, posterior with black. In the anal angle a blue circle enclosing two black spots.

HESPERIA MELIBŒUS: alis bicaudatis cœruleiscentibus: limbo fusco, subtus flavescensibus: anticis fusco posticis nigro frigris, angulo ani atro: annulis cœruleis. *Fab. Ent. Syst.* 3. 271. *fp.* 44.—UNFIGURED.

## PLEBEII RURALES.

---

### PAPILIO TYRTÆUS.

#### SPECIFIC CHARACTER.

Two tails. Above brown. An undulated white streak, and black margin, with two intermediate red spots on the under side of the posterior wings.

HESPERIA TYRTÆUS: alis bicaudatis fuscis: posticis subtus friga undata alba lunulique marginalibus nigris, intermediis rufis. *Fab. Ent. Syst.* 3. 271. *fp.* 46.—UNFIGURED.

---

### PAPILIO XENOPHON.

#### SPECIFIC CHARACTER.

Two tails. Above brown, disk yellow. Beneath cinereous, a white and brown streak across the middle.

HESPERIA XENOPHON: alis bicaudatis fuscis: disco flavo, subtus cinereo friga media alba fuscæ innata. *Fab. Ent. Syst.* 3. 272. *fp.* 47.—UNFIGURED.

---

### PAPILIO ACHÆUS.

#### SPECIFIC CHARACTER.

Two very short tails. Above brown, with yellow spots. Beneath yellow spotted with gold.

HESPERIA ACHÆUS: alis sub-bicaudatis fuscis: maculis flavis, subtus flavis duro maculatis. *Fab. Ent. Syst.* 3. 273. *fp.* 53.

---

### PAPILIO PHORBAS.

#### SPECIFIC CHARACTER.

Wings tailed. Above brown, disk white. Beneath white, with cinereous streaks: two black spots in the anal angle of the lower wing.

HESPERIA PHORBAS: alis caudatis fuscis: disco albo, subtus albis cinereo strigosis: punctis duobus anguli ani atris. *Fab. Ent. Syst.* 3. 277. *fp.* 68.—UNFIGURED.

LEPIDOPTERA.



\* *Papilio Melibor.* \* \* *Tyrtius Xenophon.* \* \*  
\* \* *Achirus Phorbus.* \* \* \*





PLEBEII RURALES.

---

PAPILIO REGULUS.

SPECIFIC CHARACTER.

Wings entire, black, with two yellow bands: the posterior one on the upper wings interrupted.

HESPERIA REGULUS: alis integerrimis nigris: fasciis duabus flavis; postica anticarum interrupta.  
*Fab. Ent. Syst. T. 3. p. 1. p. 318. Sp. 205.—UNFIGURED.*

---

PAPILIO LUCANUS.

SPECIFIC CHARACTER.

Wings entire, black, disk yellow: posterior pair beneath red with square brown spots.

HESPERIA LUCANUS: alis integerrimis nigris: disco flavo, posticis subtus rubris: maculis quadratis fuscis. *Fab. Ent. Syst. T. 3. p. 1. p. 322. Sp. 221.—UNFIGURED.*

---

PAPILIO SALUSTIUS.

SPECIFIC CHARACTER.

Wings entire, fulvous varied with black: anterior ones beneath spotted with black; posterior pair cinereous with black spots.

HESPERIA SALUSTIUS: alis integerrimis fulvis nigro variis: anticis subtus nigro punctatis, posticis cinereis fusco maculatis. *Fab. Ent. Syst. T. 1. p. 3. p. 310. Sp. 175.—UNFIGURED.*

## PLEBEII RURALES.

---

### PAPILIO TARQUINIUS.

#### SPECIFIC CHARACTER.

Wings entire, black: an oblong sinuated yellow spot at the base of the first pair: lower ones yellow, spotted with black at the anal angle.

HESPERIA TARQUINIUS: alis integerrimis nigris: anticis macula oblonga bascos sinuata, posticis angulo ani flavo nigro maculato. *Fab. Ent. Syst. T. 1. p. 3. p. 319. Sp. 207.—UNFIGURED.*

---

### PAPILIO ÆMULIUS.

#### SPECIFIC CHARACTER.

Wings entire, cinereous, spotted with brown and white: posterior wings pale above; the lower surface entirely dotted with brown.

HESPERIA ÆMULIUS: alis integerrimis cinereis fusco alboque maculatis: posticis supra pallidis, subtus omnibus fusco punctatis. *Fab. Ent. Syst. T. 1. p. 3. p. 322. Sp. 219.—UNFIGURED.*

---

### PAPILIO NUMITOR.

#### SPECIFIC CHARACTER.

Wings entire, fuscous: disk of the posterior pair above yellow; beneath entirely yellow and without spots.

HESPERIA NUMITOR: alis integerrimis fuscis: posticis supra disco flavo, subtus totis flavis immaculatis. *Fab. Ent. Syst. T. 1. p. 3. p. 324. Sp. 228.—UNFIGURED.*

LEPIDOPTERA.



*Papilio Tarquinus.*

*Papilio Emilius.*

*Papilio Numitor.*





LEPIDOPTERA.



\* *Papilio Plinius.* \* *Plato. Hippocrates.* \*\*  
\*\* *Theocritus.* \* *Parrhasius* \*\*

## PLEBEII RURALES.

---

### PAPILIO PLINIUS.

#### SPECIFIC CHARACTER.

Wings furnished with a tail, white, variegated with brown: a double golden spot in the anal angle of the posterior wings.

HESPERIA PLINIUS: alis caudatis albo fufcoque variis, poficis fubtus puncto gemino aureo anguli ani.  
*Fab. Ent. Syfl. T. 3. p. 1. p. 284. Sp. 92.—UNFIGURED.*

---

### PAPILIO PLATO.

#### SPECIFIC CHARACTER.

Wings furnished with a tail. Above blue, with a deep brown border. Beneath grey, with white undulated streaks; a black eye, having two white central spots near the posterior margin of the second pair.

HESPERIA PLATO: alis caudatis cœruleis: limbo fufco fubtus cinereis albo undatis: poficis oculo atro: pupilla gemina. *Fab. Ent. Syfl. T. 3. p. 1. p. 288. Sp. 103.—UNFIGURED.*

---

### PAPILIO HIPPOCRATES.

#### SPECIFIC CHARACTER.

Wings furnished with a tail. Above brown, first pair tipped with white. Beneath white, with black spots.

HESPERIA HIPPOCRATES: alis caudatis fufcis apice albis fubtus albis nigro punctatis.  
*Fab. Ent. Syfl. T. 3. p. 1. p. 288. Sp. 105.—UNFIGURED.*

---

### PAPILIO THEOCRITUS.

#### SPECIFIC CHARACTER.

Wings furnished with a tail; above greenish, anterior margin and apex dark; beneath brown spotted with yellow.

HESPERIA THEOCRITUS: alis caudatis virefcentibus: costa obfcuriore, fubtus nigris flavo punctatis.  
*Fab. Ent. Syfl. T. 3. p. 1. p. 289. Sp. 106.—UNFIGURED.*

## PLEBEII RURALES.

---

### PAPILIO PARRHASIUS.

#### SPECIFIC CHARACTER.

Wings furnished with a tail. Above either blue or brown, with a row of white circles along the posterior margin of the second pair. Beneath ash-coloured, streaked with white: gold spots near the tail.

HESPERIA PARRHASIUS: alis caudatis cœruleis (fufcis) fubtus cinereis albo frigidis: posticis punctis marginalibus aurcis. *Fab. Ent. Syff. T. 3. p. 1. p. 289. Sp. 108.—UNFIGURED.*

---

The two sexes of Papilio Parrhasius are very dissimilar. The female is largest, the disk of the wings blue, the male is brown with the slightest tinge of that colour.

---

### PAPILIO BIBULUS.

#### SPECIFIC CHARACTER.

Wings entire, above brown; beneath white, with a transverse streak of brown and silver circles.

HESPERIA BIBULUS: alis integerrimis fufcis fubtus albis: posticis fascia argentea fufco punctata. *Fab. Ent. Syff. T. 3. p. 1. p. 307. Sp. 163.—UNFIGURED.*

---

### PAPILIO HYLAX.

#### SPECIFIC CHARACTER.

Wings entire, above brown, without spots; beneath ash-colour, spotted with black.

HESPERIA HYLAX: alis integerrimis supra fufcis immaculatis fubtus cinereis nigro punctatis. *Fab. Ent. Syff. T. 3. p. 1. p. 304. Sp. 152.*

---

### PAPILIO CŒNUS.

#### SPECIFIC CHARACTER.

Wings entire, white, anterior and exterior margins of the first pair brown, and enclosing two white spots.

HESPERIA CŒNUS: alis integerrimis albis: anticis margine exteriore fufco albo maculato. *Fab. Ent. Syff. T. 3. p. 1. Sp. 308. Sp. 169.—UNFIGURED.*



LEPIDOPTERA.



\* *Papilio Bibulus.*      \* *Nylax. Coenus.* \*  
 \* *Livius. Romulus.* \*      \* *Ptolemæus. Uridius.* \*\*

*London, Published as the Act directed by E. Desbarreaux, April 1789.*



## PLEBEII RURALES.

---

### PAPILIO LIVIUS.

#### SPECIFIC CHARACTER.

Wings entire, above black, with a large blue spot in the disk of each; beneath greyish, with several transverse red bars edged with silver across the posterior pair.

*HESPERIA LIVIUS*: alis integerrimis atris: macula disci cærulea posticis subtus cinereis: fasciis rufis argenteo marginatis. *Fab. Ent. Syst. T. 3. p. 1. p. 315. Sp. 194.—UNFIGURED.*

---

### PAPILIO ROMULUS.

#### SPECIFIC CHARACTER.

Wings entire, above uniformly brownish-black: beneath green, with a rufous spot near the exterior margin of the posterior wings.

*HESPERIA ROMULUS*: alis integerrimis fuscis subtus viridibus: posticis macula rufa.  
*Fab. Ent. Syst. T. 3. p. 1. p. 316. Sp. 195.—UNFIGURED.*

PLEBEII RURALES.

---

PAPILIO PTOLEMÆUS.

SPECIFIC CHARACTER.

Wings entire, above ferruginous streaked with brown; beneath blue, pale at the base.

HESPERIA PTOLEMÆUS: alis integerrimis ferrugineis fusco strigosis subtus cœruleis basi pallidioribus.

*Fab. Ent. Syst. T. 3. p. 1. p. 319. Sp. 209.—UNFIGURED.*

---

PAPILIO OVIDIUS.

SPECIFIC CHARACTER.

Wings entire, spotted with gold: above fulvous, beneath yellowish.

HESPERIA OVIDIUS: alis integerrimis auro punctatis supra fulvis, subtus flavescensibus.

*Fab. Ent. Syst. T. 3. p. 1. p. 320. Sp. 212.*

---

Papilio Bibulus, Hylax, Cœnus, Livius, Romulus, Ptolemæus, and Ovidius, are represented on the

*Adiantum succulentum.*



LEPIDOPTERA.



\* *Papilio Curius.* *Papilio Propeituis.* \*  
\* \* *Papilio Tibullus.*

## PLEBEII URBICOLE.

---

### PAPILIO CURIUS.

#### SPECIFIC CHARACTER.

Very long tails. General colour black: a transparent and a white stripe across the anterior wings, the latter extending across the posterior ones.

PAPILIO CURIUS: alis caudatis concoloribus atris: anticis fasciis duabus hyalinis, posticis unica alba.

*Fab. Ent. Syst. T. 3. p. 1. p. 28. sp. 81.—UNFIGURED.*

---

This extraordinary creature seems to partake of characters common to the *Equites*, as well as the *Plebeii*. Fabricius, who describes it, refers it to the *Ea. Ach.* in the *Entomologia Systematica*, but we are persuaded its characters are more decisively those of the *Plebeii*. The specimen is from Siam.—Cabinet of the Right Hon. Sir Joseph Banks, Bart.

---

### PAPILIO PROPERTIUS.

#### SPECIFIC CHARACTER.

Wings divaricated, black, spotted with yellow. Beneath, posterior pair barred alternately with rufous and yellow.

HESPERIA PROPERTIUS: alis divaricatis nigris flavo maculatis: posticis subtus fasciis rufis flavisque alternis.

*Fab. Ent. Syst. T. 3. p. 1. p. 325. sp. 234.—UNFIGURED.*

---

### PAPILIO TIBULLUS.

#### SPECIFIC CHARACTER.

Wings entire. Anterior pair black, spotted with yellow. Posterior pair yellow surrounded with black.

HESPERIA TIBULLUS: alis integerrimis: anticis nigris flavo maculatis, posticis flavis: limbo nigro.

*Fab. Ent. Syst. T. 3. p. 1. 326. sp. 235.—UNFIGURED.*

---

### PAPILIO AUGIAS.

#### SPECIFIC CHARACTER.

Wings divaricated, fulvous, a row of black spots along the exterior margin, and an oblique black mark in the middle of the anterior pair.

HESPERIA AUGIAS: alis divaricatis fulvis: fascia obliqua margineque postico nigris.

*Linn. Syst. Nat. 2. 794.—257.*

*Amoen. Acad. 4. 410. 80.*

*Fab. Ent. Syst. T. 3. p. 1. p. 327. sp. 239.—UNFIGURED.*

PLEBEII URBICOLÆ.

---

PAPILIO ORIGINES.

SPECIFIC CHARACTER.

Wings divaricated. Uniform brown; base of the anterior wings more testaceous: an oblique row of whitish spots nearly across the middle.

HESPERIA ORIGINES: alis divaricatis concoloribus fuscis: striga punctorum alborum, anticis basi testaceis.  
*Fab. Ent. Syst. T. 3. p. 1. p. 328. sp. 245.—UNFIGURED.*

---

PAPILIO PLUTARGUS.

SPECIFIC CHARACTER.

Wings entire, above dark brown, powdered with gold: a yellow spot at the tip of the anterior wings: the exterior margin testaceous.

HESPERIA PLUTARGUS: alis integerrimis fuscis auro irroratis: anticis supra macula apicis, subtus margine exteriori testaceis. *Fab. Ent. Syst. T. 3. p. 1. p. 329. sp. 251.—UNFIGURED.*

---

PAPILIO EPICLETUS.

SPECIFIC CHARACTER.

Wings entire, above blackish, disk yellow: a brown spot along the centre of the anterior wing, having a lunar yellow mark in the middle. Beneath yellow, without spots.

HESPERIA EPICLETUS: alis integerrimis nigris: disco flavo, anticis macula fusca: lunula flava, posticis subtus flavis immaculatis. *Fab. Ent. Syst. T. 3. p. 1. p. 330. sp. 252.—UNFIGURED.*

---

PAPILIO CHEMNIS.

SPECIFIC CHARACTER.

Somewhat tailed; brown, with transparent spots, posterior margin yellow.

HESPERIA CHEMNIS: alis subcaudatis fuscis hyalino maculatis margineque postico flavo.  
*Fab. Ent. Syst. T. 3. p. 1. p. 331. sp. 257.—UNFIGURED.*



LEPIDOPTERA.



\* *Papilio Augias.*    *Papilio Origines.*  
\*\* *Pulargus.*    *Epictetus.*\*





LEPIDOPTERA.



*Papilio Chemnis. Papilio Thruax.* \*  
\* *Mithridates. Thrusibulus.* \*

## PLEBEII URBICOLÆ.

---

### PAPILIO THRAX.

#### SPECIFIC CHARACTER.

Wings brown, with a few transparent spots, posterior pair somewhat lengthened in the anal angle.  
Antennæ hooked at the extremity.

HESPERIA THRAX: alis ecaudatis fuscis: maculis aliquot fenestratis, antennis uncinatis.

*Linn. Syst. Nat.* 2. 794. 260.

*Fab. Ent. Syst. T. 3. p. 1. p. 337. Sp. 232.*

---

Cramer has figured three varieties of Papilio Thrax as distinct species, under the names of Salus, Sebaldus, and Ramafis; it may be proper therefore to observe that our specimen corresponds with that in the Linnæan cabinet.

---

### PAPILIO MITHRIDATES.

#### SPECIFIC CHARACTER.

Wings rotund, disk black, spotted with purple; a deep purple band with a central streak of pale lunar marks.

HESPERIA MITHRIDATES: alis rotundatis atris: macula fasciaque postica purpureis; lunulis pallidioribus.

*Fab. Ent. Syst. T. 3. p. 1. p. 336. Sp. 278.—UNFIGURED.*

---

### PAPILIO TRASIBULUS.

#### SPECIFIC CHARACTER.

Wings entire; above black, with numerous blue lunar marks; beneath paler: space of the anal angle flesh-colour, with brown spots.

HESPERIA TRASIBULUS: alis integerrimis atris: lunulis cæruleis, posticis subtu angulo ani cinereo fusco punctato. *Fab. Ent. Syst. T. 3. p. 1. p. 346. Sp. 315.—UNFIGURED.*

---

### PAPILIO JOVIANUS.

#### SPECIFIC CHARACTER.

Wings black, disk of the posterior pair blue, radiated with several oblong white spots near the base.

HESPERIA JOVIANUS: alis concoloribus atris: posticis cæruleo alboque radiatis.

*Fab. Ent. Syst. T. 3. p. 1. p. 348. Sp. 324.—UNFIGURED.*

PLEBEII URBICOLÆ.

PAPILIO SALVIANUS.

SPECIFIC CHARACTER.

Wings entire; above brown spotted with green; beneath, posterior pair white, with a marginal streak of brown spots.

HESPERIA SALVIANUS: alis integerrimis fuscis viridi maculatis: posticis fubtus albis; friga marginali punctorum fulcorum. *Fab. Ent. Syfl. T. 3. p. 1. p. 348. Sp. 325.—UNFIGURED.*

---

PAPILIO GALENUS.

SPECIFIC CHARACTER.

Wings entire, uniformly brown with yellow spots; beneath nearly as above.

HESPERIA GALENUS: alis integerrimis concoloribus fuscis flavo maculatis.

*Fab. Ent. Syfl. T. 3. p. 1. p. 350. Sp. 332.—UNFIGURED.*

---

PAPILIO CATULLUS.

SPECIFIC CHARACTER.

Wings entire, uniformly black, with a marginal streak of white points: a few similar white points in the centre of the anterior pair also.

HESPERIA CATULLUS: alis rotundatis integerrimis atris: anticis albo punctatis, posticis friga punctorum alborum. *Fab. Ent. Syfl. T. 3. p. 1. p. 348. Sp. 323.—UNFIGURED.*

---

PAPILIO SPIO.

SPECIFIC CHARACTER.

Wings entire, reversed, blackish with many white spots.

HESPERIA SPIO: alis integerrimis reversis nigricantibus undique albo maculatis.

*Linn. Syfl. Nat. 2. 796. 271.*

*Muf. Lud. Ultr. 330.*

*Fab. Ent. Syfl. T. 3. p. 1. p. 354. Sp. 348.—UNFIGURED.*

---

Papilio Jovianus, Salvianus, Galenus, Catullus, and Spio, are figured on the

*Clerodendrum Infortunatum,*

A plant recently introduced from the East Indies.

LEPIDOPTERA.



*Papilio Jovianus.*\*

*Salvianus. Galenus.*\*\*

*Castellus. Spic.*\*\*\*





LEPIDOPTERA.



*Phalana figura.*    *Phalana strigata.*  
*Phalana hieroglyphica.*





LEPIDOPTERA.



\* *Papilio Ennius.*      *Papilio Polybius.* \*

\* \* *Papilio Zelucus.*

# LEPIDOPTERA.

---

## PHALÆNA MINEUS.

### GENERIC CHARACTER.

Antennæ gradually tapering from the base: tongue spiral: wings in general deflected when at rest.  
Fly by night.

### SPECIFIC CHARACTER.

Cyaneous: wings orange, with blue spots.

BOMBYX MINEUS: cyanea alis concoloribus aurantiis maculis cyaneis.

---

Cramer has given the figure of a small specimen of this fine *Phalæna* under the trivial name of *Mineus*. This is evidently of the male; the antennæ of which are not however very correctly expressed. Both sexes of this rare insect are represented in the annexed plate, the drawings of which were taken from specimens met with in Bengal by Mr. Fichtel of Vienna. The originals are at this time in the cabinet of the Emperor of Germany.

---

## PHALÆNA SCALARIS.

### SPECIFIC CHARACTER.

Snowy white, with numerous abbreviated black streaks, and a longitudinal fulvous stria.

COSSUS SCALARIS: nivens frigris numerosis abbreviatis nigris striaque longitudinali fulva. *Fab. Ent. Syll.*  
*T. 3. p. 2. p. 5. Sp. 5.—UNFIGURED.*

HEPIALUS SCALARIS. *Mant. Inf. 2. 135. 7.*

---

Described by Fabricius, from a specimen in the cabinet of Mr. Monfon, as a native of China. The specimen represented in the annexed plate was brought from Bengal, and is as well as the preceding at this time in the cabinet of the Emperor of Germany.

---

## PHALÆNA SANGUINOLENTA.

### SPECIFIC CHARACTER.

Wings incumbent snowy, costal edge of the anterior pair sanguineous: posterior pair spotted with black.

BOMBYX SANGUINOLENTA: alis incumbentibus niveis: anticis costa fanguinea, posticis maculis atris.  
*Fab. Ent. Syll. T. 3. p. 1. p. 473. Sp. 206.*

---

This insect is rare: our specimen was received from Bombay.

## LEPIDOPTERA.

---

### PHALÆNA FIGURA.

#### SPECIFIC CHARACTER.

Anterior wings whitish, with brown and black spots; in the middle a black character resembling figure 7: posterior wings cinereous.

BOMBIX FIGURA: alis anticis albidis fusco nigroque maculatis: medio figura 7 nigro notatis, posticis cinereis.

---

A nondescript species in our possession; from Madras.

---

### PHALÆNA STRIGATA.

#### SPECIFIC CHARACTER.

Anterior wings brown, with a longitudinal green daub: posterior pair yellowish, with a lunar spot, and border of black.

NOCTUA STRIGATA: lævis alis anticis fuscis; litura longitudinali viridi, posticis luteis: lunula limboque nigris.

---

This moth agrees entirely with the *Noctua Dioscoreæ* of Fabricius, *Ent. Syst. T. 3. p. 2. p. 16. n. 26.* except in having a large green streak on the upper wings. It appears, indeed, to have been hitherto confounded with that species, either as a sexual difference, or variety; but we are persuaded it is neither. Both sexes of *N. Dioscoreæ* in particular, have occurred to our observation, without this streak.—Found in Bengal.

---

### PHALÆNA HIEROGLYPHICA.

#### SPECIFIC CHARACTER.

Wings broad, dentated, black: on the first pair an abbreviated band, and somewhat ocellated spot: two notches in the margin of the posterior ones.

NOCTUA HIEROGLYPHICA: alis patulis dentatis atris: anticis fascia abbreviata alba maculaque subocellari; posticis biemarginatis, *Fab. Ent. Syst. T. 3. p. 2. p. 11. Sp. 10.*

---

Common in the East Indies.



LEPIDOPTERA.



*Phalena Minus. Phalena scalaris.:*  
*Phalena junonensis.:*



LEPIDOPTERA.



\* *Papilio Orcus.*

*Papilio Busiris.* \*

\*\* *Papilio Celsus.*



PLEBEII URBICOLÆ.

---

PAPILIO ENNIUS.

SPECIFIC CHARACTER.

Wings brown, anterior pair with transparent spots: posterior pair black above with a yellow disk, beneath brown with a white disk.

HESPERIA ENNIUS: alis fuscis: anticis hyalino maculatis, posticis supra atris: disco flavo, subtus fuscis: disco albo. *Fab. Ent. Syst. T. 3. p. 1. p. 337. Sp. 283.—UNFIGURED.*

---

PAPILIO POLYBIUS.

SPECIFIC CHARACTER.

Wings without tails, and black: on the first pair a fulvous spot; second pair yellow at the anal angle.

HESPERIA POLYBIUS: alis ecaudatis atris: anticis macula fulva, posticis angulo ani flavo. *Fab. Ent. Syst. T. 3. p. 1. p. 337. Sp. 281.—UNFIGURED.*

---

PAPILIO ZELEUCUS.

SPECIFIC CHARACTER.

Wings entire, above and beneath black: margin of the lower ones white; head and tail fanguineous.

HESPERIA ZELEUCUS: alis integris concoloribus atris: posticis margine albo, capite caudaque fanguineis. *Fab. Ent. Syst. T. 3. p. 1. p. 346. Sp. 317.—UNFIGURED.*

---

The three preceding Butterflies are represented on a sprig of the LAGERSTRÆMIA INDICA, or INDIAN LAGERSTRÆMIA.

PLEBEII URBICOLÆ.

---

PAPILIO ORCUS.

SPECIFIC CHARACTER.

Wings rotundated, brown: anterior ones spotted with yellow: posterior pair beneath blucish.

HESPERIA ORCUS: alis rotundatis fuscis: anticis flavo maculatis, posticis fubtus cærulefcntibus. *Fab. Ent. Syfl. T. 3. p. 1. p. 341. Sp. 296.—UNFIGURED.*

---

PAPILIO BUSIRIS.

SPECIFIC CHARACTER.

Wings oblong, entire, brown: two large spots, and dots of yellow on the anterior pair; disk of the posterior ones yellow.

HESPERIA BUSIRIS: alis oblongis integerrimis atris: anticis maculis punctifque duobus flavis, posticis difco flavo. *Fab. Ent. Syfl. T. 3. p. 1. p. 345. Sp. 310.*

---

PAPILIO CELSUS.

SPECIFIC CHARACTER.

Wings entire, above and beneath dark brown, with a yellow band on the anterior ones.

HESPERIA CELSUS: alis integerrimis concoloribus atris: anticis fascia flava. *Fab. Ent. Syfl. T. 3. p. 1. p. 347. Sp. 316.—UNFIGURED.*



NEUROPTERA.



*Myrmelcon Pardalis.* \* *Myrmelcon punctatum.*

# NEUROPTERA.

## MYRMELEON PARDALIS.

### PANTHER MYRMELEON.

#### GENERIC CHARACTER.

Mouth armed with jaws, two teeth and four long palpi. Tail of the male furnished with forceps or two fraight filaments. Antennæ club-shaped, length of the thorax. Wings deflected.

#### SPECIFIC CHARACTER.

Wings whitish sprinkled with black. Thighs yellow.

MYRMELEON PARDALIS: alis albis: punctis nigris sparatis, femoribus flavis.

*Fab. Ent. Syst. T. 2. p. 92. sp. 2.—UNFIGURED.*

---

Few species of the Myrmeleon genus have been discovered. Linnæus describes only five, and those are chiefly natives of Europe. Fabricius adds seven more, besides three others in the genera *Ascalaphus*, in the *Entomologia Systematica*, and particularly two from India, in the cabinet of Sir JOSEPH BANKS, Bart. *M. Pardalis* and *M. Punctatum*; these are the only Indian Myrmeleons hitherto ascertained; to the Entomologist they are equally interesting as new and unfigured species, but *M. Pardalis* is much superior in beauty to the other. The characteristic distinction of *M. Punctatum* is the alternate black and white specks, or interrupted dashes in the reticulations of the wings. *M. Pardalis* is reticulated also with delicate brownish nerves, and its general colour a fine yellow, elegantly barred with transverse streaks of brown.—From the coast of Coromandel.

The Natural History of the Myrmeleon-larva is curious, and has been traced in some of the European kinds by *Reaumur*, *Roefel*, and others, particularly in the *M. Formica-Leo* of Geoffroy; this creature, among other peculiarities, is furnished in the front with a large pair of forceps, with which it takes its prey. It forms circular cavities in the sand, and concealing itself in the center with only the forceps above the surface catches the weaker or unwary insects that come within the verge of its cell.

NEUROPTERA.

---

MYRMELEON PUNCTATUM.

PUNCTATED MYRMELEON.

SPECIFIC CHARACTER.

Wings transparent, nerves alternately punctured with black and white.

MYRMELEON PUNCTATUM: alis hyalinus: nervis punctis albis nigrisque alternis.

*Fab. Ent. Syst. T. 2. p. 94. fp. 7.—UNFIGURED.*

---

An East Indian species, in the cabinet of Sir Joseph Banks, Bart.





HYMENOPTERA.



*Chrysis fasciata.*  
*Chrysis oculata. Chrysis splendida.*

## HYMENOPTERA.

---

### CHRYSIS FASCIATA.

#### GENERIC CHARACTER.

Mouth horny, projecting. Jaws much longer than the lip, linear, membranaceous, and emarginate at the tip. No tongue. Palpi four, advanced unequal, filiform. Antennæ short and filiform, consisting of twelve joints, the first of which is longest. Body shining like gold, and glossy. Abdomen arched beneath, with a scale on each side. Tail most commonly deatated. Sting somewhat exserted. Wings flat.

#### SPECIFIC CHARACTER.

Thorax green, with a blue band: anterior part of the abdomen blue fasciated with violet, golden in the middle, posterior end red, with four teeth.

CHRYSIS FASCIATA: thorace viridi fascia cyanea abdomine antice cyaneo-violaceoque fasciato; medio aureo, postice rubro quadridentato.—UNFIGURED.

---

This charming insect is from Tranquebar, where we have every reason to believe it to be uncommonly rare. The species does not appear to be described by any author, the only specimen we are acquainted with, is in the cabinet of the Right Hon. Sir J. Banks, Bart.

---

### CHRYSIS SPLENDIDA.

#### SPECIFIC CHARACTER.

Shining blue, with four teeth at the tail.

CHRYSIS SPLENDIDA: cœrulea nitida, ano quadridentato. *Fab. Spec. Inf. p. 454. Sp. 1.*—UNFIGURED.

## H Y M E N O P T E R A .

Very scarce. This is a native of Tranquebar, where it was discovered by Dr. Koenig. Fabricius describes this insect from a specimen in the cabinet of Sir Joseph Banks, Bart.—A variety of the same species is found in New Holland.

---

### C H R Y S I S   O C U L A T A .

#### S P E C I F I C   C H A R A C T E R .

Shining green: an ocellated golden spot on each side of the abdomen: tail blue, armed with six teeth.

C H R Y S I S   O C U L A T A : viridis nitens, abdomine utrinque macula ocellari .aurea, ano sexdentato cœruleo.  
*Fab. Ent. Inf. p. 455. Sp. 4.—UNFIGURED.*

---

*Chrysis oculata* is distinguished for the peculiar brilliancy of its colours. This, as well as the foregoing species, was found by Dr. Koenig at Tranquebar. Fabricius describes this insect from a specimen in the collection of Sir Joseph Banks, Bart.; from whence our figure is also taken. We have since received the same kind from Bengal through the medium of Mr. Fichtel of Vienna.



HYMENOPTERA.



*Vespa cincta.*      *petiolata. arcuata.*  
*Novaeis. tipida.*      *typa. violacea.*

## HEMIPTERA.

---

### VESPA CINCTA.

#### GENERIC CHARACTER.

Mouth horny: jaws compressed: palpi four, unequal, filiform. Antennæ filiform: first joint longest and cylindrical. Eyes lunar. Body glossy. Sting concealed. Upper wings folded in both sexes.

#### SPECIFIC CHARACTER.

Black, thorax obscurely spotted; body black, with a ferruginous band.

VESPA CINCTA: nigra thorace obscure maculato, abdomine atro: fascia ferruginea. *Fabr. Ent. Syst. T. 2. p. 253. sp. 1.*

SPHEX TROPICA. *Sulz. Hist. Inf. tab. 27. fig. 5.*

---

From Tranquebar.

---

### VESPA PETIOLATA.

#### SPECIFIC CHARACTER.

Ferruginous and yellow varied; abdominal petiole incurved and ferruginous, with a black band.

VESPA PETIOLATA: ferrugineo flavoque varia abdominis petiolo incurvo ferrugineo: fascia atra. *Fabr. Ent. Syst. T. 2. p. 278. 87.*

---

This, with the foregoing species, is remarkably common in many parts of the East Indies. Fabricius speaks of it as a native of Malabar.

---

### VESPA ARCUATA.

#### SPECIFIC CHARACTER.

Black, variegated with yellow; petiole of the abdomen incurved, with four yellow spots.

VESPA ARCUATA: nigra flavo variegata abdominis petiolo incurvo: maculis quatuor flavis. *Fabr. Ent. Syst. T. 2. p. 276. Sp. 83.—UNFIGURED.*

---

Described by Fabricius as a native of New Holland; we have received it Madras.

## HYMENOPTERA.

---

### VESPA MACAENSIS.

#### SPECIFIC CHARACTER.

Yellow; thorax black with yellow lines; abdomen marked with undulated black streaks.

VESPA MACAENSIS: flava thorace lineis abdomine fasciis undulatis nigris. *Fab. Ent. Syst. T. 2. p. 259. Sp. 22.*

---

Rare. The specimen from which our figure is copied is in the cabinet of the Right Hon. Sir J. Banks, Bart. From Macao.

---

### VESPA TEPIDA.

#### SPECIFIC CHARACTER.

Black; anterior lobe of the thorax, two dots, and tip of the abdomen ferruginous.

VESPA TEPIDA: nigra thorace lobo antico punctisque duobus abdomineque apice ferrugineis. *Fab. Ent. Syst. T. 2. p. 262. Sp. 31.—UNFIGURED.*

---

### APIS VIOLACEA.

#### GENERIC CHARACTER.

Mouth horny; jaw and lip membranaceous at the apex; tongue inflected: palpi four, unequal, and filiform; antennæ filiform and short: wings flat; sting of the females and neuters acute, and concealed.

#### SPECIFIC CHARACTER.

Hirsute, black, wings violaceous.

APIS VIOLACEA: hirsuta atra alis violaceis. *Linn. Syst. Nat. 2. 959. 38?*

---

This insect is described by writers as a native of the South of Europe. We have the same species from the East Indies.





DIPTERA.



*Diopsis Ichneumonaria* L.

# DIPTERA.

---

## DIOPSIS ICHNEUMONEA.

### GENERIC CHARACTER.

Horns on the head two, filiform, without joints, much longer than the head, with the eyes at the tips.

### SPECIFIC CHARACTER.

Black; head, anterior part of the abdomen, and legs ferruginous: two spines on the posterior extremity of the thorax.

DIOPSIS ICHNEUMONEA: nigra capite abdomine antice pedibusque ferrugineis, thorace postice bispinoso.

---

The appearance of this curious insect is peculiarly striking. Nothing can be more singular than the disposition of the eyes, which are situated at the extremity of two long immoveable pedicles arising from the head, most exactly in that part which in other insects bears the antennæ. In this particular the *Diopsis* differs not only from other insects of the kindred genera, but also from all the other kinds we are acquainted with. Some few of the *Cancer*, &c. have indeed the eyes placed at the extremity of elongated pedicles, as is for example instanced in the *Cancer angulatus*, yet these are obvious dissimilar in construction, for they are moveable at the base, and may be directed towards any object at the will of the animal with the utmost facility; but to accomplish this, the motion of the pedicle in the *Diopsis* must be necessarily accompanied by that of the head, or even of the whole body. The eyes of the latter are notwithstanding so conveniently stationed at the globular extremity of the pedicles, as to embrace a far more comprehensive range of sight than is usual with the generality of insects.

To the inexperienced entomologist, the *Diopsis* would rather seem to be furnished with remarkable horns, and be destitute of eyes, although the latter are so very conspicuous when they are pointed out; it is on the contrary the true horns or antennæ that are so minute as to be most likely to escape attention, for each of these consists only of a single setaceous hair, or bristle seated on a very small tubercle just beneath the eye.

It has been previously intimated, in the description of the *Paufus denticornis*, that the first account of the *Diopsis* was inserted in a small tract published by Linnæus at Upsal, in 1775. From this we learn, that both the *Diopsis* and the *Paufus* were found by Andreas Dahl among a parcel of insects in the possession of Dr. Fothergill, of London, by whom they were sent to Linnæus. These consisted chiefly of insects

## D I P T E R A.

collected in North America and Guinea, but the habitat either of the *Paufus*, or the *Diopfis* in particular, it is very certain was by no means exactly known. Fuefly notwithstanding describes the latter upon this ambiguous authority, only as a native of Cayenne, and after him Gmelin notes the same insect from South America, and Guinea perhaps with as little reason. Latreille tells us it is from the coast of Angola, on the information of Perrin, a zealous naturalist of Bordeaux. Our own specimens (and they are most assuredly the *Diopfis Ichneumonea* of Linnæus) were brought from Bengal, where it was discovered by Mr. Fichtel, who has thus established the habitat of this singular creature beyond dispute.

Linnæus, to whom only this individual species of *Diopfis* was known, as usual with him under such circumstances, does not assign to it any specific character. We are acquainted with another species of this genus, a native of Africa, in the collection of T. Marsham, Esq. which will render our deviation from his example excusable, although the latter is at present undescribed.

# I N D E X

ACCORDING TO THE

## SYSTEMA NATURÆ OF LINNÆUS.

### COLEOPTERA.

SCARABÆUS.  
Pl. 1, 2.  
Atlas  
fpinifex  
Miliaris  
Koenigii  
Cetonia hiftrio  
carulea

BUPRESTIS.  
Pl. 3.  
fternicornis  
Chryfis  
Ænea  
4-maculata

CARABUS.  
Pl. 4.  
6-maculatus  
2-maculatus

PAUSUS.  
Pl. 5.  
denticornis  
thoracicus  
Fichtelii  
pilicornis

CURCULIO.  
Pl. 6.  
Regalis  
Palmarum

### HEMIPTERA.

FULGORA.  
Pl. 7, 8.  
Pyrorhynchus  
hyalinata  
festiva  
lineata  
pallida

CICADA.  
Indica

MANTIS.  
Pl. 9, 10, 11.  
gigas  
viridis  
ficcifolia

GRYLLUS.  
Pl. 12.  
reticulatus  
punctatus  
montrofus

LOCUSTA.  
Pl. 13.  
Ambloinenfis  
citrifolia

### CIMEX.

Pl. 14.  
nigripes  
papillofus  
cruciatus  
mactans  
uouigtattus  
viridis  
ferratus

### LEPIDOPTERA.

#### PAPILIO.

Pl. 15, 16, 17, 18, 19,  
20, 21, 22, 23, 24, 25,  
26, 27, 28, 29, 30, 31,  
32, 33, 34, 35, 36, 37,  
31, 39, 40, 41, 42, 43,  
44, 45, 46, 47, 48, 49,  
50, 51, 52.

Antenor  
Antiphus  
Priamus  
Panthous  
Heliacou  
Idæus  
Aftyanax  
Polymnestor  
Diephobus  
Lacedemon  
Empedocles  
Ulyffes  
Evalthe  
Lethe  
Cocles  
Tiridates  
Idea  
Hippia  
Affinis  
Philomela  
Leucippe  
Danæ  
Mæruia  
Judith  
Libythea  
Eucharis  
Genuttia  
Amaryllis  
Caftalia  
Scylla  
Cacta  
Octavius  
Pyrrhus  
Menetho  
Arce filaus  
Blandina  
Liberia  
Phegea  
Fatima  
Thyelia  
Nero

Guidia  
Hiarba  
Ifis  
Phorcys  
Eribotes  
Ididore  
Cydippe  
Dirce  
Eurinome  
Hippona  
Cyane  
Cœnobita  
Cocalia  
Sophia  
Auge  
Baldus  
Periander  
Allica  
Obrinus  
Liria  
Crantor  
Pann  
Pindarus  
Vulcanus  
Cbiton  
Herodotus  
Pythagoras  
Florus  
Lifiâs  
Sophocles  
Jarbas  
Thales  
Melibœus  
Tyrtaeus  
Xenophon  
Achaus  
Phorbas  
Strephon  
Æolus  
Pericles  
Philippus  
Thucydides  
Petronius  
Regulus  
Lucanus  
Tarquinius  
Æmulius  
Numitor  
Plinius  
Plato  
Hippocrates  
Theocritus  
Parrhafius  
Bibulus  
Hylax  
Cœnus  
Livius  
Romulus  
Ptolemæus  
Ovidius  
Curius  
Propertius  
Tibullus

Augias  
Origenes  
Plutargus  
Epicteus  
Chemnis  
Thrax  
Mithridates  
Thraffibulus  
Jovianus  
Salvanus  
Galenus  
Catullus  
Spio  
Eunius  
Polybius  
Zeuleucus  
Orcus  
Bufiris  
Celfus

#### PHALÆNA.

Pl. 53, 54.  
Mineus  
scalaris  
fanguinolenta  
figura  
frigata  
hieroglyphica

### NEUROPTERA.

MYRMELEON.  
Pl. 55.  
Pardalis  
punctatum

### HYMENOPTERA.

CHRYISIS.  
Pl. 56.  
fasciata  
splendida  
oculata

VESPA.  
Pl. 57.  
cincta  
petiolata  
arcuata  
Macænfis  
tepida

APIS.  
violacea

### DIPTERA.

DIOPSIS.  
Pl. 58.  
Ichneumœna

# I N D E X

ACCORDING TO THE

## ENTOMOLOGIA SYSTEMATICA OF FABRICIUS.

**CLASS 1. ELEUTERATA.**

**Genus 2. *Scarabæus*.**

Atlas  
spinifex  
Miliaris  
Koenigii

**Genus 76. *Cetonia*.**

Hifrio  
Cærulea

**Genus 19. *Carabus*.**

2-maculatus  
6-maculatus.

**Genus 78. *Buprestis*.**

sternicornis  
Chrysis  
Ænea

**Genus 61. *Cerocoma*.**

(*Paufus* Linn.  
& Fabr. *Systema Eleuteratorum*.)  
denticornis  
thoracicus  
Fichtelii  
pilicornis

**Genus 102. *Curculio*.**

Regalis  
Palmarum

**CLASS 2. ULONATA.**

**Genus 120. *Mantis*.**

(*Phasma* Ent.  
*Syst. Supp.*)

gigas  
viridis  
ficcifolia

**Genus 124. *Locusta*.**

Amboinensis  
citriifolia

**Genus 125. *Gryllus*.**

reticulatus  
punctatus  
montrosus

**ORDER 9. GLOSSATA.**

**Genus 186. *Papilio*.**

\**Equites Trojani*,  
Antenor  
Antiphus  
Priamus  
Panthous  
Helacoon  
Idæus  
Aftyanax  
Polymneffor  
Deiphobus

\*\**Equites Achivi*,  
Ulyffes

Curius  
Lacedemon

\*\*\**Festiva*.

Evalthe  
Eurinome  
Philomela  
Hippia  
affinis

\*\*\*\*\**Nymphales*.

Pyrrhus  
Tiridates  
Cocles  
Periander  
Empedocles  
Octavius  
Iris

Eribotes

Ifidore

Phorcys

Lethe

Fatima

Menetho

Cydippe

Cyane

Caëta

Dirce

Hiarba

Blandina

Phegea

Gnidia

Thyelia

Liberia

Arcefilæus

Hippone

Nero

Obrinus

Crantor

\*\*\*\*\**Parnassii*.

Idea

\*\*\*\*\**Danai*.

Amaryllis

Castalia

Scylla

Leucippe

Danæ

Mæruia

Judith

Libythea

Eucharis

Genutia

\*\*\*\*\**Satyræ*.

Baldus

Liria

Allica

Cænobita

Auge

Sophia

Cocalia

**Genus 187. *Hesperia*.**

\**Rurales*.

Pann

Pindarus

Vulcanus

Chiton

Herodotus

Pythagoras

Florus

Lifias

Sophocles

Jarbas

Thales

Melibæus

Tyrteus

Xenophon

Achæus

Phorbas

Strephon

Æolus

Pericles

Philippus

Thucydides

Petronius

Regulus

Lucanus

Tarquinius

Æmulius

Numitor

Plinius

Plato

Hippocrates

Theocritus

Parrhafius

Bibulus

Obrinus

Hylax

Cænus

Livius

Romulus

Ptolemæus

Ovidius

\*\**Urbicole*.

Propertius

Tibullus

Augias

Origines

Plutargus

Epicetus

Chemnis

Thrax

Mithridates

Thrafibulus

Salvianus

Galenus

Catullus

Spio

Ennius

Polybius

Zeleucus

Orcus

Bufris

Celfus

**Genus 191. *Bombyx*.**

fanguinolenta

figura

**Genus 192. *Coffus*.**

Mineus

scalaris

**Genus 194. *Noctua*.**

ifrigata

hieroglyphica

**ORDER SYMISTATA.**

**Genus 133. *Myrmeleon*.**

pardalis

punctatum

**ORDER PIEZATA.**

**Genus 147. *Chrysis*.**

fasciata

spilendida

oculata

**Genus 151. *Vespa*.**

cinëla

petiolata

arcuata

Macensis

tepida

**Genus 158. *Apis*.**

violacea

**ORDER RYNGOTA.**

**Genus 201. *Fulgora*.**

Pyrorhynchus

Hyalinata

festiva

lineata

pallida

**Genus 204. *Cicada*.**

Indica

**Genus 213. *Cimex*.**

nigripes

Papillofus

cruciatus

macans

uniguttatus

viridis

ferratus

**ORDER ANTLIATA.**

*Diopsis*.

*Ichneumonea*

ERRATA.

Part of the letter prefs contained in the fourteenth number of this work having been inadvertently put to prefs before the author received the corrected sheets, it has been found necessary to reprint the Linnean and Fabrician Indexes, and at the same time to request the indulgence of the reader for the following incorrections that appear in other parts of the work.

---

“ Index according to the *SYSTEMATICA NATURÆ*” to be cancelled, that referring to the *SYSTEMA NATURÆ* being intended to supply its place.

*PAUSUS DENTICORNIS*, sixth line from the bottom of the page, for *Sphæroides* (*Pausus*) read *Sphærocerus*

*PAUSUS THORACICUS*, fourth line, for *testaceis* read *testaceus*; and for *bipartite* read *bipartito*, after which insert a comma.

*CIMEX UNIGUTTATUS* fourth line, for *ferrugineis* read *ferrugineus*.

Among the *Plebeii Urbicolæ* ~~dele~~ description of *Hesperia* (*Papilio*) *Salustius*, a small insect of which no figure is given.

---

Running title on the description of *Papilio Panthous*, and *Papilio Idæus*, for *HEMIPTERA* read *LEPIDOPTERA*.