

XXVII. *A Century of Insects, including several new Genera described from his Cabinet. By the Rev. William Kirby, M.A. F.R. and L.S.*

Read November 4, 1817.

THE infinite host of non-descript insects occurring in the entomological cabinets of this country, is rather disgraceful to us: and what is more so, we permit foreigners to do that for us which we are fully competent to do ourselves. Witness the numbers described by Fabricius, Olivier, and others from British collections.

Pudet hæc opprobria nobis.

Et dici potuisse et non potuisse refelli.

I am not, however, so illiberal as to wish that the entomologists of the continent should be excluded from our cabinets: if we ourselves are too idle, or too busy, to give the public some account of our entomological treasures, it is for the interest of science that they should do it for us.

To remove, in some degree, this opprobrium, I beg leave to offer to the Linnean Society descriptions of a century of the non-descript insects of my own cabinet. Should this attempt meet with approbation, I may be induced, perhaps, to describe the remainder; and I wish that my example may stimulate other gentlemen to do the same with respect to their own collections.

In my general arrangement I have followed that of my kind
and

and learned friend M. Latreille, in adhering to which I have found that my cabinet contained many insects that could not well be placed in any of his present genera. These I have named and characterized.

COLEOPTERA PENTAMERA.

(*Cicindelidæ.*)

MEGACEPHALA Latreille.

brasiliensis. 1. *M. viridis*, elytris dorso nigro: macula apicis, ore, pedibusque rufescentibus.

Long. corp. lin. $8\frac{1}{2}$ —9.

Habitat in Brasilia. D. Hancock.

M. Carolinæ simillima, sed minus nitida. *Thorax* dorso nigrescit. *Elytra* nigra: margine laterali tantum viridi; macula apicis lineari rufa, nec apex ipse pallidus ut in illa.

The comparative length of the maxillary and labial palpi, upon which this genus is built, seems to me, in this case especially, to indicate a family rather than a genus. The labrum, however, is of a different shape from that of most other *Cicindelidæ*.

CICINDELA Linn.

nivea. 2. *C. ænea niveo-pilosa*, labro elytrisque glabris albis.

Long. corp. lin. 7.

Habitat in Brasilia. D. Hancock.

Statura fere *C. capensis*, sed paulo angustior. *Corpus* æneum: subtus lateribus, capite thorace pedibusque pilis longis niveis decumbentibus, vestitis. *Labrum* album glabrum. *Elytra* glaberrima, punctulatissima, alba: scutello suturaque æneis, prope basin lineis duabus; interiori longiori, punctorum impressorum

Sheppardi. 94. Ch.

PLATE XXII. FIG. 14.

Long. corp. lin. $\frac{3}{4}$.

Habitat in Anglia. Apud Offton in Suffolcia a D. Sheppard rarius lectus, strenue saltans.

Corpus oblongum, cylindricum, piceum, pilositate parva obscurum. *Caput* subinflexum, subtriangulare, punctulatissimum: clypeo plano subelongato. *Mandibulæ* acutæ, edentulæ. *Palpi* subsetacei: articulo extimo acuto et fere subulato. *Antennæ* thoracis fere longitudine, nigræ: articulis duobus primis magnis incrassatis rufis, tertio brevi obconico, quarto subelongato cylindrico, sequentibus quatuor obconicis, tribus ultimis præcedentibus subito majoribus, nono et decimo obconicis extimo fere ovato, clavam laxam efformantibus. *Oculi* subrotundi, planiusculi. *Thorax* ex globoso conicus, convexus, punctulatissimus: puncto utroque sub lente forti centro eminenti. *Scutellum* vix ullum. *Coleoptra* oblonga, striata: striis punctatis. *Tibiæ* rufæ submuticæ. *Tarsi* item rufi: articulo intermedio reliquis latiori. *Unguiculi* duo brevissimi.

Entomologo cordato oculatissimo Revetto Sheppardo, A.B. S.L.S. hoc insectum ab ipso solummodo adhuc inventum, et mihi benevole communicatum, merito dicatur.

ORTHOPTERA.

BLATTA.

Mouffeti. 95. *B. fusca*, thorace antice reflexo utrinque angulato.

Mouffet 130, fig. infima.

Kirby and Spence *Introduct. to Entomology*, ii. 329.

Long. corp. lin. 22.

Habitat in Brasilia frequens. D. Hancock.

Corpus

Corpus depressum, totum fuscum, obscurum. *Caput* utrinque sub oculos apud antennarum basin interne puncto pallido. *Thorax* supra rugosus, antice fulvus; margine antico emarginato, et laterali exciso, reflexis pallidis, disco gibbus. *Tarsi* articulis omnibus pulvillatis.

Var. β. Elytris, thoraceque luridis.

MANTIS.

sinuata. 96. *M. fusco-cinerea*, oculis spinosis, elytris sinuatis alarum longitudine.

Long. corp. lin. 24.

Habitat in Brasilia. D. Hancock, ♀ in Mus. D. MacLeay.

♂.

Affinis *M. oculatae* et *lobatae* Fabr. Folium aridum exactissime refert. *Corpus* fusco-cinereum, obscurum. *Oculi* ovales, spina acuta sursum terminati. *Antennae* setosae, fulvae, submoniliformes: articulis ultra 30 brevissimis turbinato-conicis. *Thorax* utrinque ante medium in angulum obtusum dilatatus. *Brachia* fulvescunt. *Elytra* longitudine alarum, latere externo sinu magno posterius excisa. *Alae* fusco maculatae. *Abdomen* fuscum.

♀.

Antennae medio crassiores, duodecim-articulatae: articulo primo crassiori longiori cylindrico, secundo minimo cylindrico, tertio elongato subclavato, reliquis cylindricis, ultimis quinque magnitudine sensim decrescentibus.

Those *Mantes* whose eyes terminate in a spine seem to form a separate family from the rest, if they may not rather be considered as a genus; for, besides the above singular character afforded by the eyes, their antennae are very different both in the number and form of the joints of which they are composed.

HEMI-

HEMIPTERA.

FULGORA.

Lathburii. 97. F. fronte rostrata ascendente, elytris viridibus, albo flavoque ocellatis, alis luteis apice nigris.

Long. corp. lin. 18.

Habitat in China. Ex Mus. D. Lathbury.

Affinis *F. candelariæ*, sed rostrum supra nigrum, apice tantum rufo. *Truncus* disco nigro. *Elytra* nigro-viridia: vasis luteis, maculis pluribus sparsis ocellaribus, pupilla lutea, iride alba. Puncta quædam alba in margine interiori. *Abdomen* pallidum, nigro maculosum.

ARACHNIDES Lamarck.

(*Phalangidæ.*)

GONYLÉPTES Kirby.

Character essentialis.

Mandibulæ chelatae.

Palpi unguiculati.

Tarsi 6—10-articulati.

Character naturalis.

Corpus triangulare. *Caput* thorace multo angustius, et ab illo linea impressa obtusangula: angulo anum spectante separatum, antice in medio biemarginatum, utrinque rectum, tuberculo vel cornu dorsali basi oculigero: oculis binis rotundis prominulis, armatum. *Mandibulæ* inflexæ, biarticulatae: articulo primo subito apice valde incrassato, ultimo subovato chelato. *Maxillæ* nullæ, ni coxæ pedum anticorum pro maxillis habendæ. *Labium* pectorale, pharynge duplici. *Palpi* quinque-articulati, incurvi: articulo primo fere obcampanulato, secundo longiori subcylindrico, tertio brevi incurvo, quarto crassiori subcylindrico,

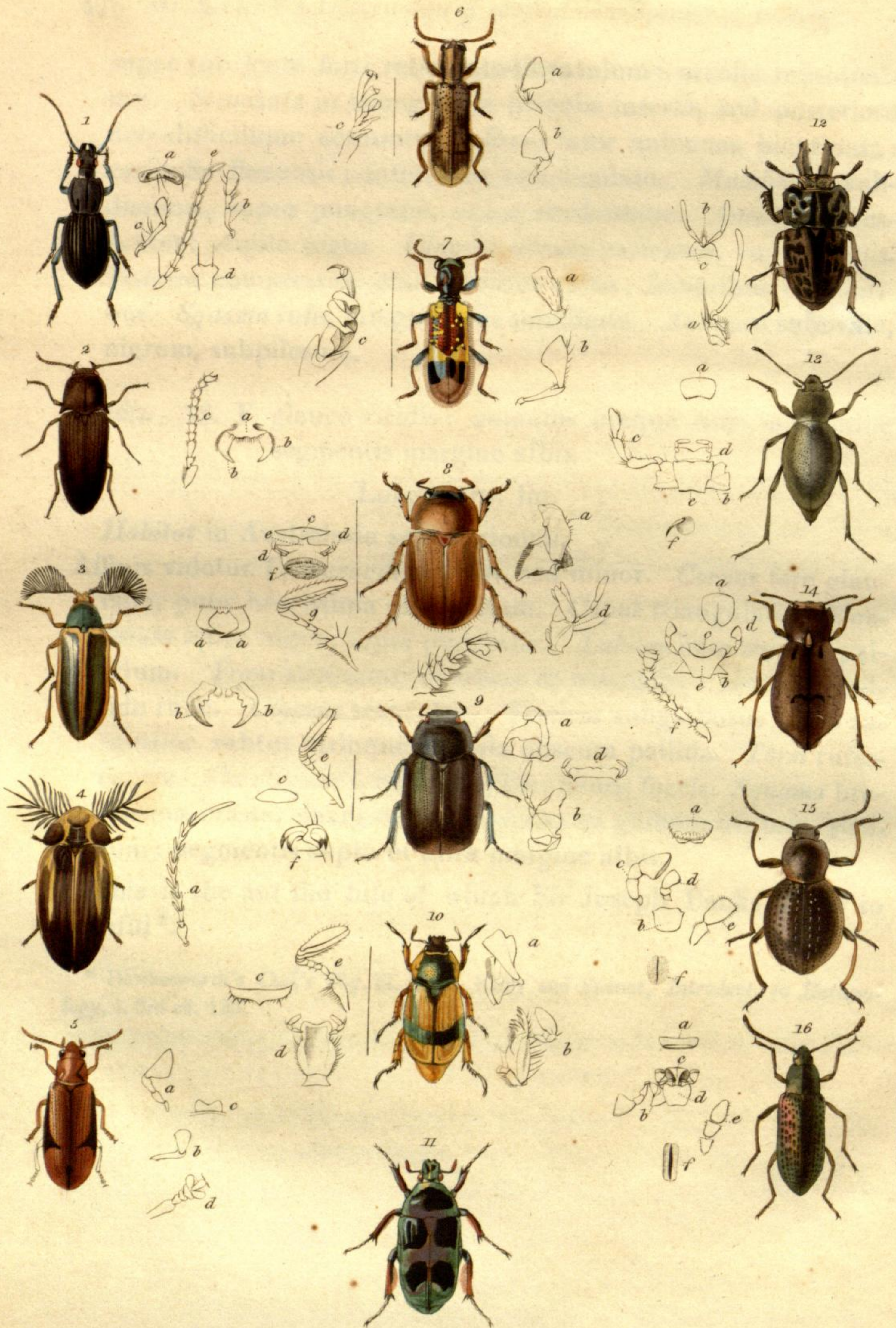


Fig. 11. *Cetonia MacLeayi*.

12. *Lucanus nebulosus*.

a. Maxilla with Maxillary Palpus. *b.* Labium with Labial Palpi. *c.* Mentum.

13. *Psammodes longicornis*.

a. Labrum. *b.* Base of Maxilla. *c.* Maxillary Palpus. *d.* Labium with Labial Palpi. *e.* Mentum. *f.* One of the setigerous puncta of the Thorax.

14. *Scotinus crenicollis*.

a. Labrum. *b.* Base of Maxilla. *c.* Labium. *d.* Maxillary Palpus. *e.* Mentum. *f.* Antenna.

15. *Sphaerotus curvipes*.

a. Labrum. *b.* Mentum. *c.* Maxillary Palpus. *d.* Labial ditto. *e.* Apex of Antenna. *f.* One of the puncta of the Elytra.

16. *Strongylium chalconatum*.

a. Labrum. *b.* Base of Maxilla with Maxillary Palpus. *c.* Labium with Labial Palpi. *d.* Mentum. *e.* Apex of Antenna. *f.* One of the puncta of the Elytra.

PLATE XXII.

Fig. 1. *Eurynotus muricatus*.

a. Labrum. *b.* Labium. *c.* Mentum. *d.* Antenna.

2. *Adelium calosomoides*.

a. Labrum. *b.* Labium with Labial Palpus. *c.* Base of Maxilla with Maxillary Palpus. *d.* Mentum. *e.* Apex of Antenna. *f.* Anterior Tarsus.

3. *Oxura setosa*.

a. Labrum. *b.* Labium. *c.* Mentum. *d.* Mandibula. *e.* One of the setigerous puncta of the Thorax.

Fig.

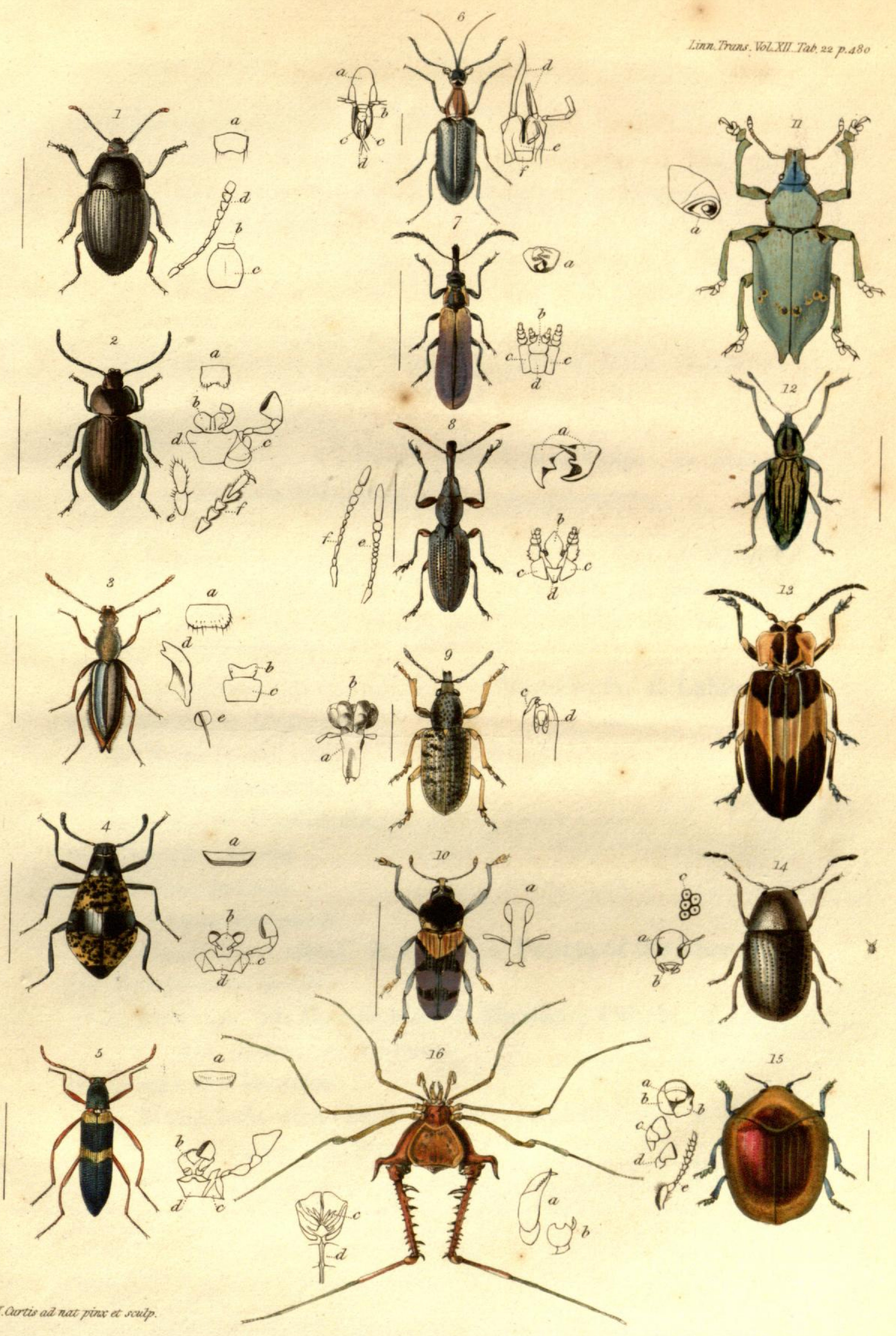


PLATE XXIII.

Fig. 1. *Buprestis cruentata*.

2. ———— *phæorhea*.

3. ———— *10-maculata*.

4. ———— *fissiceps*.

5. *Bolboceras Australasice*.

a. Labrum. b. Mandibulæ. c. Labium with Labial Palpus. d. Maxilla with Maxillary Palpus. e. Mentum*. f. Antenna.

6. *Cetonia Brownii*.

7. *Adelium caraboides*.

8. *Helæus Brownii*.

9. *Curculio mirabilis*.

a. Ventral Cavity and Apparatus. bb, cc. Laminæ in ditto.

10. *Distichocera maculicollis*.

a. Labium. b. Antenna.

11. *Leptura ceramboides*.

12. *Chrysomela Curtisii*.

13. *Achilus flammeus*.

a. Front. b. Antenna.

* c d e are from *Bolboceras quadridens*.

